

General Description

CONTROL SYSTEMS

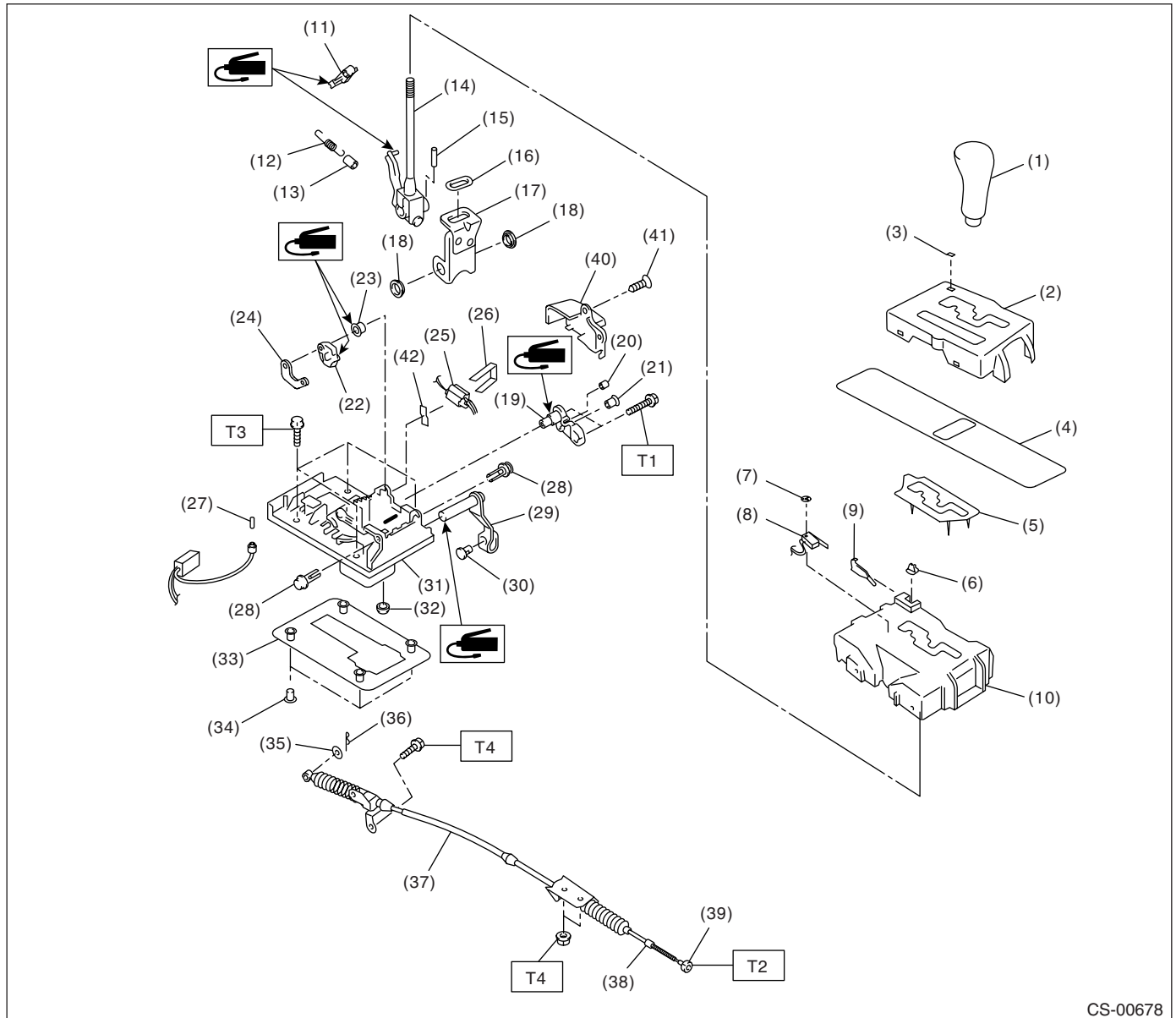
1. General Description

A: SPECIFICATION

Item	Specification
Swing torque of rod against lever N (kgf, lb)	3.7 (0.38, 0.84) or less

B: COMPONENT

1. AT SELECT LEVER



CS-00678

General Description

CONTROL SYSTEMS

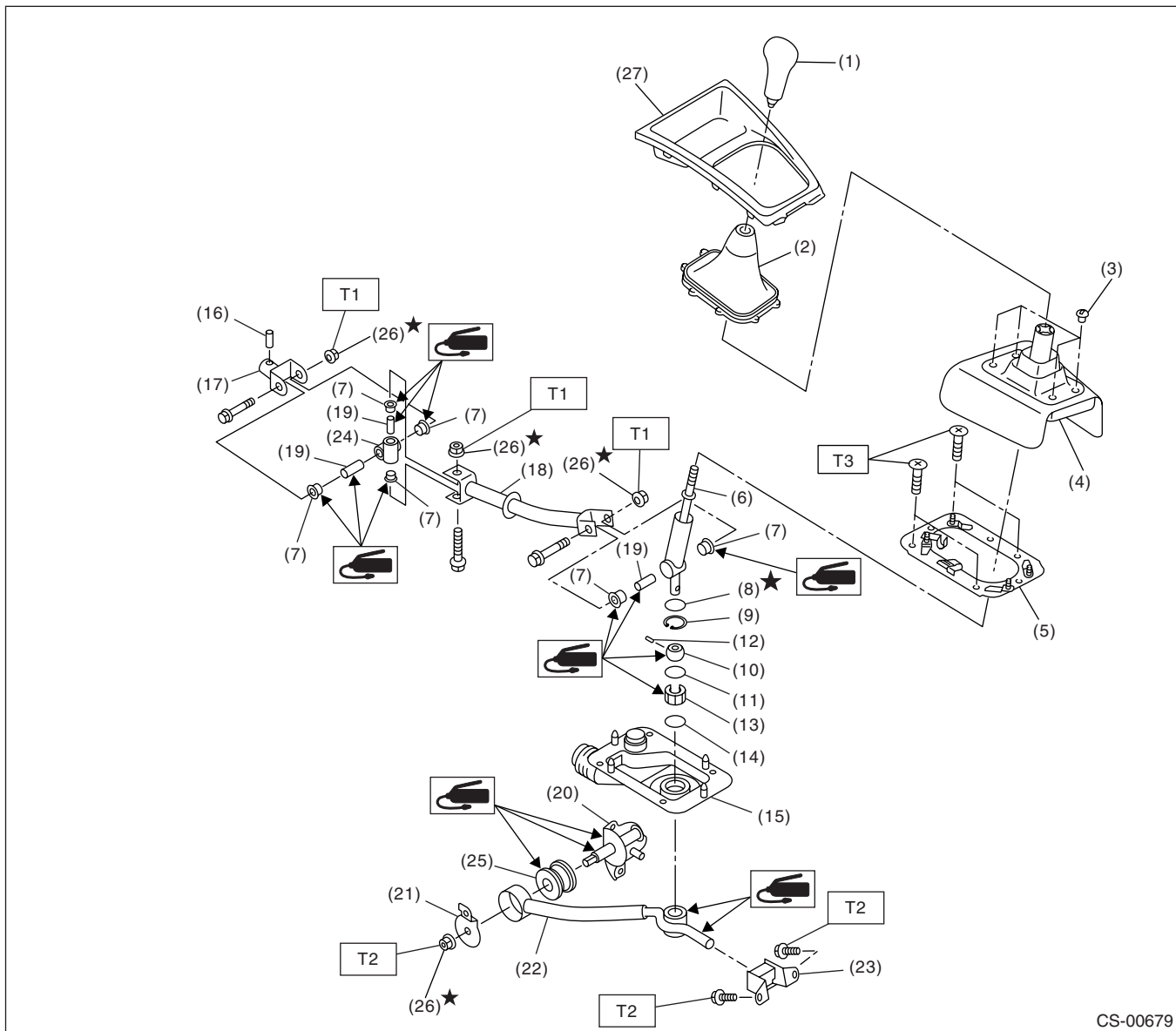
(1) Grip	(17) Bracket	(33) Packing
(2) Indicator cover	(18) Bushing	(34) Spacer
(3) Cover	(19) Lock plate B	(35) Washer
(4) Blind	(20) Bushing	(36) Snap pin
(5) Cushion	(21) Bushing	(37) Select cable
(6) Button	(22) Lock plate A	(38) Adjusting nut B
(7) Clip	(23) Bushing	(39) Adjusting nut A
(8) P range switch	(24) Lock plate C	(40) Cover
(9) Spring	(25) Shift lock solenoid	(41) Clip
(10) Guide plate	(26) Clamp	(42) Cushion
(11) Detent arm	(27) Indicator bulb	
(12) Detent spring	(28) Clip	
(13) Tube	(29) Select lever arm	
(14) Selector lever COMPL	(30) Bushing COMPL	
(15) Spring pin	(31) Base plate	
(16) Bushing	(32) Grommet	

Tightening torque: N·m (kgf-m, ft-lb)**T1: 2.0 (0.2, 1.4)****T2: 7.5 (0.76, 5.5)****T3: 13 (1.3, 9.4)****T4: 18 (1.8, 13.0)**

General Description

CONTROL SYSTEMS

2. MT GEAR SHIFT LEVER



CS-00679

- | | | |
|-----------------------------|-----------------|-----------------------|
| (1) Gear shift knob | (12) Spring pin | (23) Cushion rubber |
| (2) Console boot | (13) Bushing B | (24) Boss |
| (3) Clamp | (14) O-ring | (25) Bushing |
| (4) Boot and insulator ASSY | (15) Boot | (26) Self-locking nut |
| (5) Plate ASSY | (16) Spring pin | (27) Front cover |
| (6) Lever | (17) Joint | |
| (7) Bushing | (18) Rod | |
| (8) Lock wire | (19) Spacer | |
| (9) Snap ring | (20) Bracket | |
| (10) Bushing | (21) Washer | |
| (11) O-ring | (22) Stay | |

Tightening torque: N·m (kgf-m, ft-lb)

T1: 12 (1.2, 8.9)

T2: 18 (1.8, 13.3)

T3: 7.5 (0.76, 5.5)

C: CAUTION

- Wear work clothing, including a cap, protective goggles and protective shoes during operation.
- Remove contamination including dirt and corrosion before removal, installation or disassembly.
- Keep the disassembled parts in order and protect them from dust and dirt.
- Before removal, installation or disassembly, be sure to clarify the failure. Avoid unnecessary removal, installation, disassembly and replacement.
- Use SUBARU genuine fluid, grease etc. or equivalent. Do not mix fluid, grease, etc. with that of another grade or from other manufacturers.
- Be sure to tighten fasteners including bolts and nuts to the specified torque.
- Place shop jacks or rigid racks at the specified points.
- Apply grease onto sliding or revolution surfaces before installation.
- Before installing O-rings or snap rings, apply sufficient amount of grease to avoid damage and deformation.
- Before securing a part on a vise, set cushioning material such as wood blocks, aluminum plate, or shop cloth between the part and the vise.
- Before disconnecting electrical connectors, be sure to disconnect the negative terminal from battery.