

## General Description

FUEL INJECTION (FUEL SYSTEMS)

---

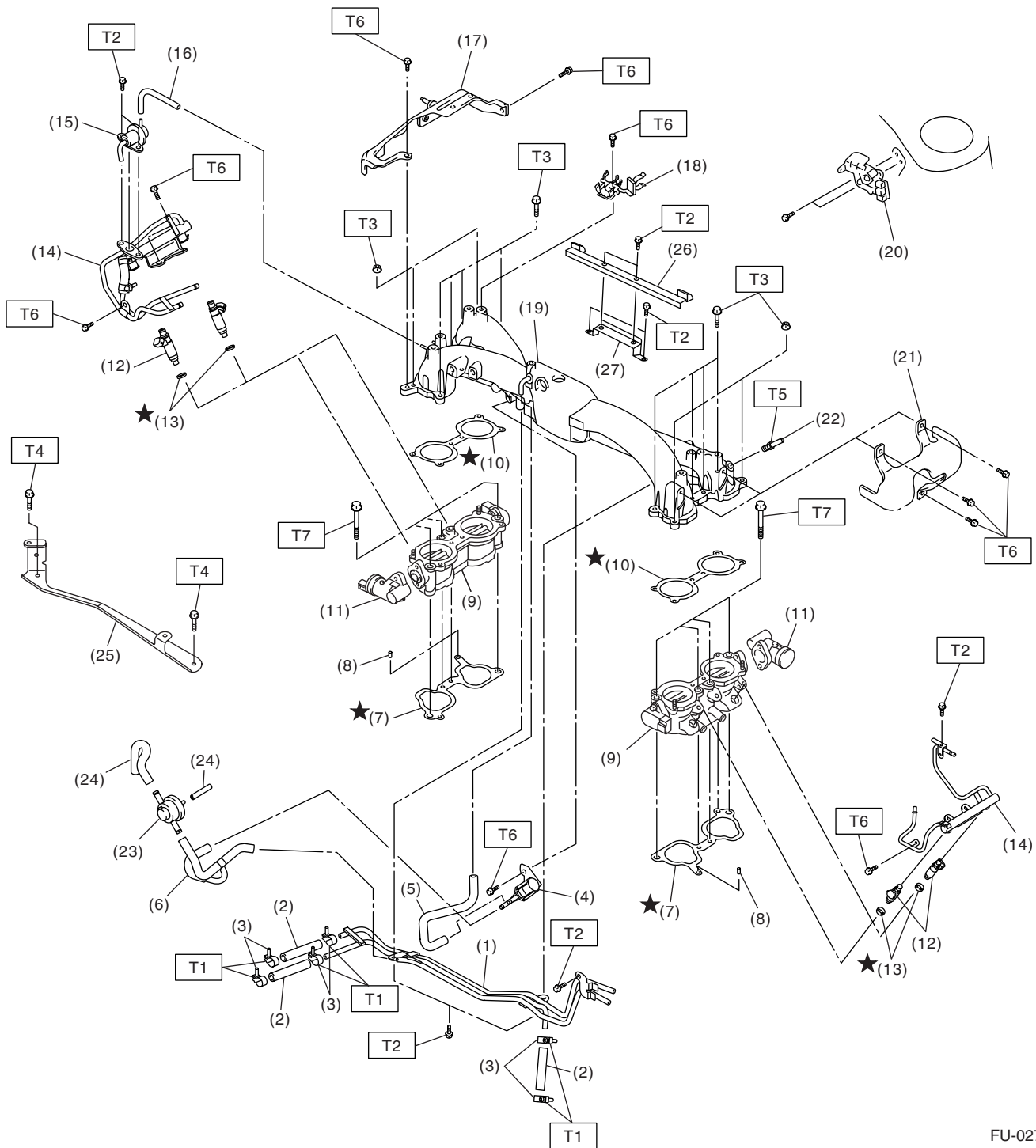
### 1. General Description

#### A: SPECIFICATION

Fuel tank	Capacity	60 ℓ (15.9 US gal, 13.2 Imp gal)
	Location	Under rear seat
Fuel pump	Type	Impeller
	Shutoff discharge pressure	450 — 677 kPa (4.59 — 6.9 kg/cm <sup>2</sup> , 65.27 — 98.2 psi)
	Discharge rate	145 ℓ (38.3 US gal, 31.9 Imp gal)/h or more [300 kPa, 12 V (3.06 kg/cm <sup>2</sup> , 43.5 psi)]
Fuel filter		Intank type

## B: COMPONENT

### 1. INTAKE MANIFOLD



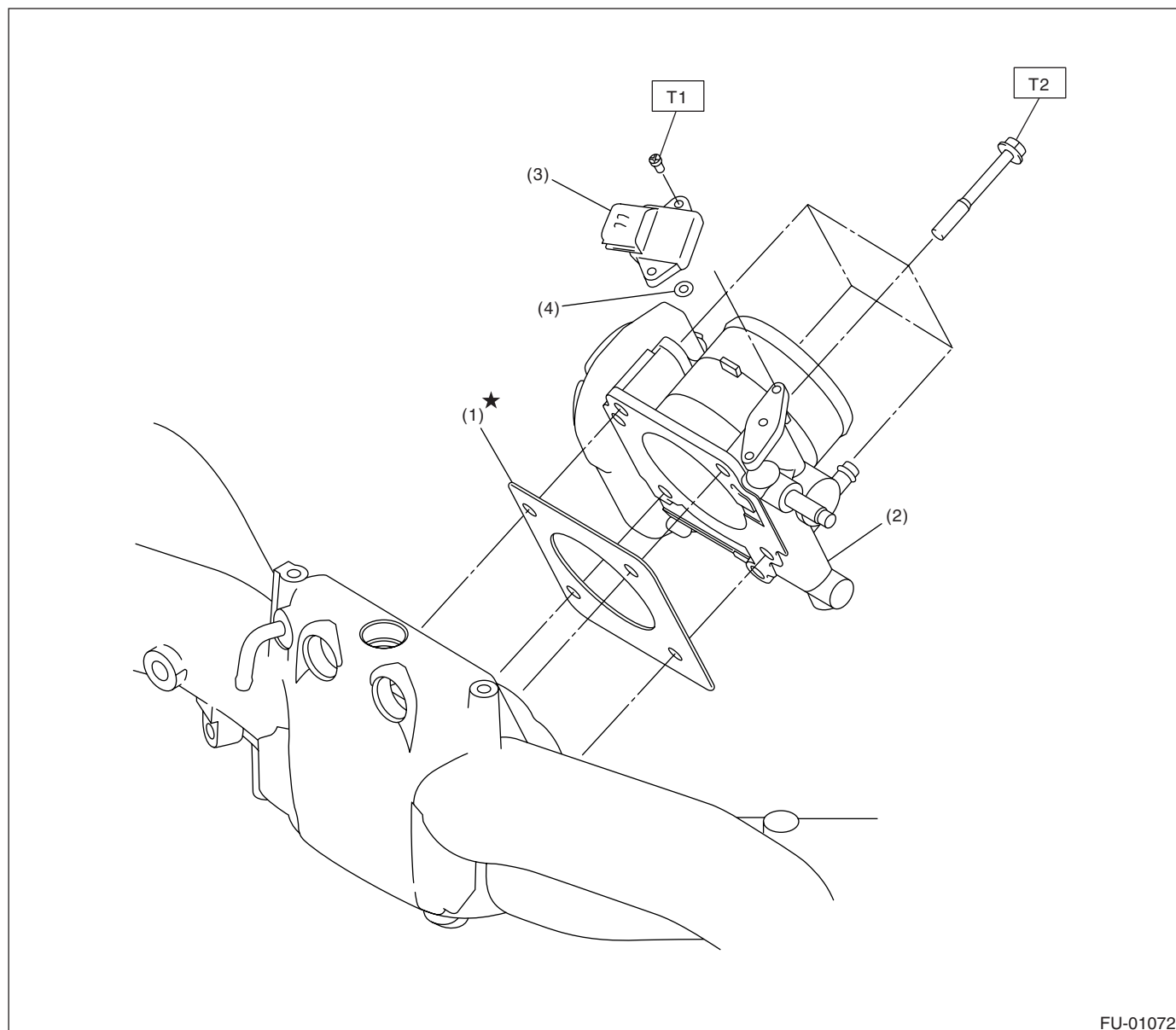
FU-02762

## General Description

### FUEL INJECTION (FUEL SYSTEMS)

(1) Fuel pipe ASSY	(14) Fuel injector pipe	(25) Collector cover bracket (Front)
(2) Fuel hose	(15) Pressure regulator	(26) Collector cover bracket (Rear)
(3) Clamp	(16) Pressure regulator hose	(27) Collector cover bracket (Rear)
(4) Purge control solenoid valve	(17) Fuel pipe protector RH	
(5) Vacuum hose	(18) Blow-by hose stay	<b><i>Tightening torque: N·m (kgf-m, ft-lb)</i></b>
(6) Vacuum control hose	(19) Intake manifold	<b><i>T1: 1.25 (0.13, 0.94)</i></b>
(7) Intake manifold gasket	(20) Wastegate control solenoid valve ASSY	<b><i>T2: 6.4 (0.65, 4.7)</i></b>
(8) Guide pin	(21) Fuel pipe protector LH	<b><i>T3: 8.25 (0.84, 6.1)</i></b>
(9) Tumble generator valve assembly	(22) Nipple	<b><i>T4: 8.5 (0.87, 6.3)</i></b>
(10) Tumble generated valve gasket	(23) Purge valve	<b><i>T5: 17 (1.73, 12.5)</i></b>
(11) Tumble generator valve actuator	(24) Purge hose	<b><i>T6: 19 (1.9, 14.0)</i></b>
(12) Fuel injector		<b><i>T7: 25 (2.5, 18.1)</i></b>
(13) O-ring		

## 2. AIR INTAKE SYSTEM



FU-01072

- (1) Gasket
- (2) Throttle body
- (3) Manifold absolute pressure sensor

- (4) O-ring

**Tightening torque: N·m (kgf-m, ft-lb)**

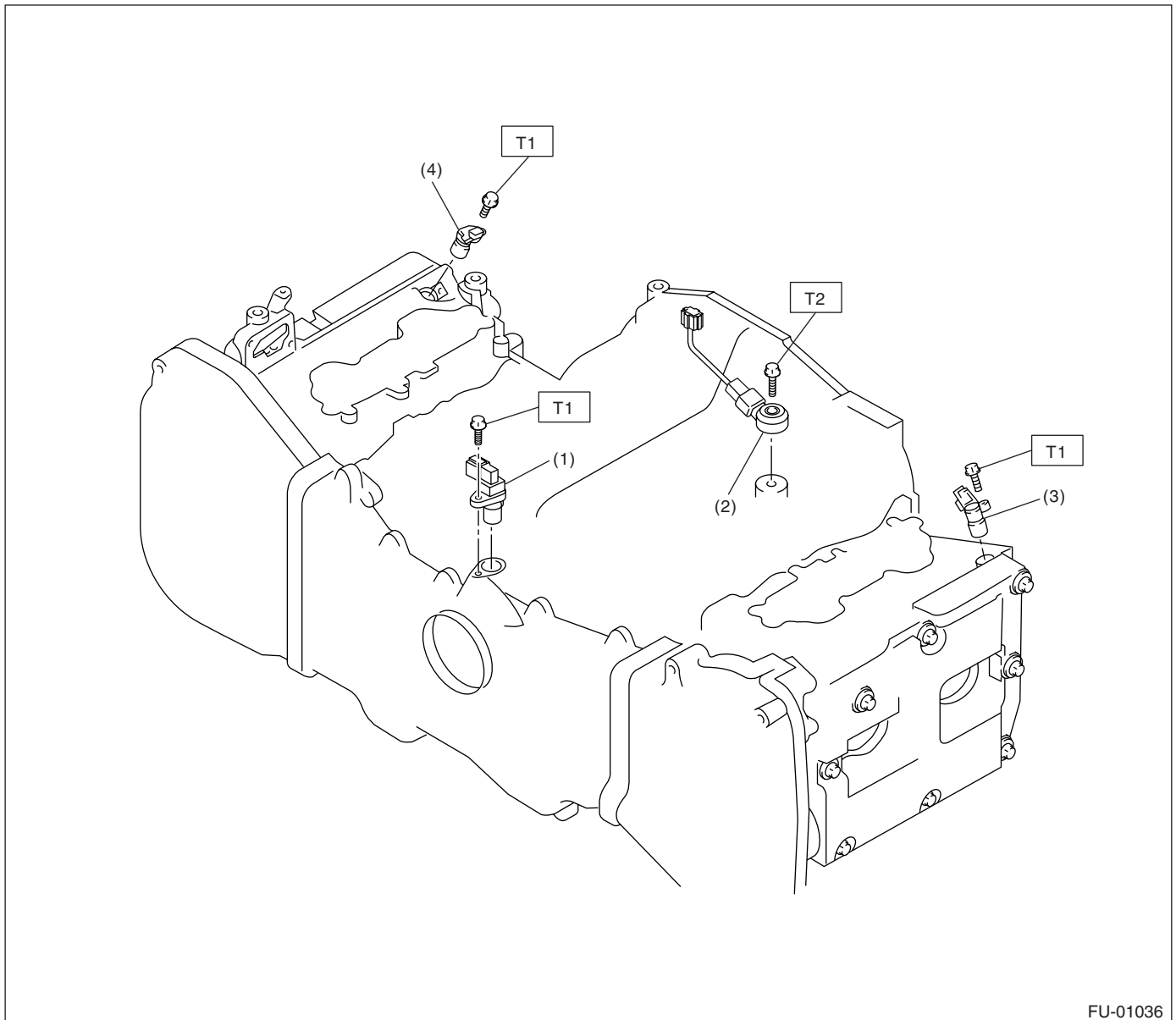
**T1: 1.6 (0.16, 1.2)**

**T2: 8 (0.8, 5.8)**

## General Description

### FUEL INJECTION (FUEL SYSTEMS)

### 3. CRANKSHAFT POSITION, CAMSHAFT POSITION AND KNOCK SENSORS



FU-01036

- (1) Crankshaft position sensor
- (2) Knock sensor
- (3) Camshaft position sensor LH

- (4) Camshaft position sensor RH

**Tightening torque: N·m (kgf-m, ft-lb)**

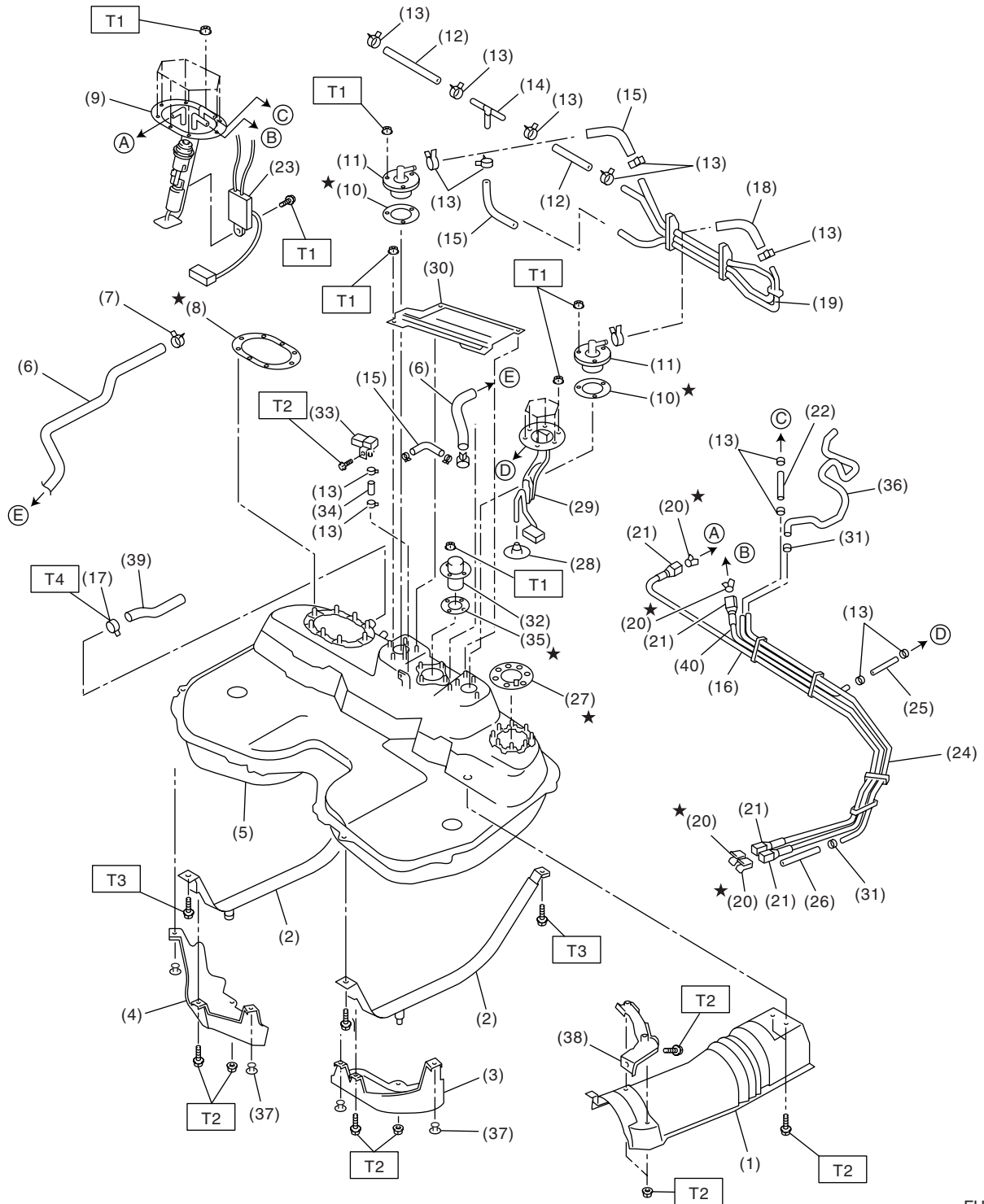
**T1: 6.4 (0.65, 4.7)**

**T2: 24 (2.4, 17.4)**

# General Description

FUEL INJECTION (FUEL SYSTEMS)

## 4. FUEL TANK



FU-02763

## General Description

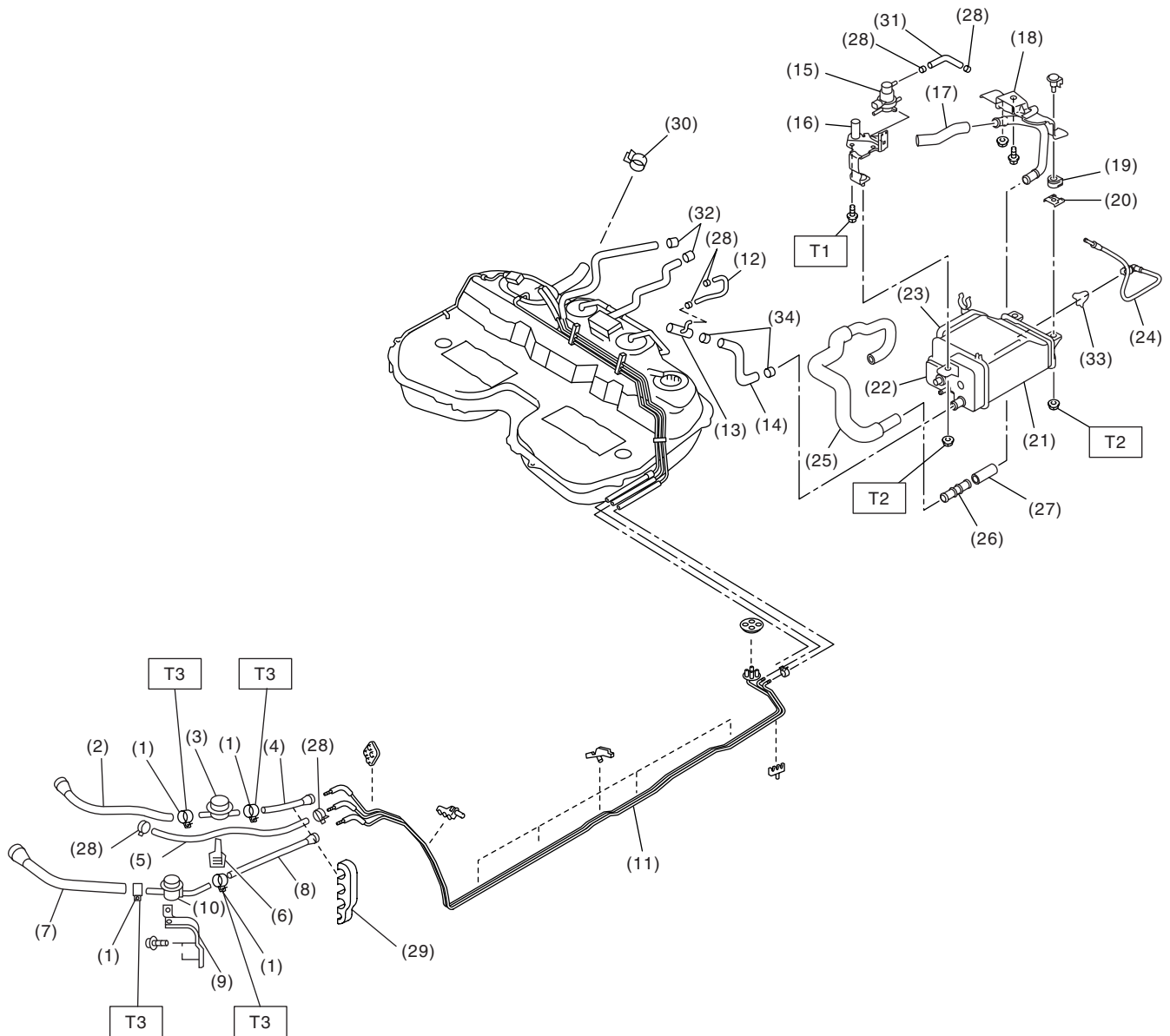
### FUEL INJECTION (FUEL SYSTEMS)

---

(1) Heat shield cover	(17) Clamp	(32) Vent valve
(2) Fuel tank band	(18) Evaporation hose C	(33) Fuel tank pressure sensor
(3) Protector LH	(19) Evaporation pipe ASSY	(34) Fuel tank pressure sensor hose
(4) Protector RH	(20) Retainer	(35) Vent valve gasket
(5) Fuel tank	(21) Quick connector	(36) Purge hose
(6) Canister hose A	(22) Jet pump hose A	(37) Clip
(7) Clamp	(23) Fuel level sensor	(38) Cover bracket
(8) Fuel pump gasket	(24) Fuel pipe ASSY	(39) Filler hose
(9) Fuel pump ASSY	(25) Jet pump hose B	(40) Fuel return tube
(10) Fuel cut valve gasket	(26) Evaporation hose D	
(11) Fuel cut valve	(27) Fuel sub level sensor gasket	<b><i>Tightening torque: N·m (kgf-m, ft-lb)</i></b>
(12) Evaporation hose A	(28) Jet pump filter	<b><i>T1: 4.4 (0.45, 3.3)</i></b>
(13) Clip	(29) Fuel sub level sensor	<b><i>T2: 7.4 (0.75, 5.4)</i></b>
(14) Joint pipe	(30) Protect cover	<b><i>T3: 33 (3.4, 25)</i></b>
(15) Evaporation hose B	(31) Clip	<b><i>T4: 1.96 (0.20, 1.45)</i></b>
(16) Fuel delivery tube		

---

### 5. FUEL LINE



FU-02816



## General Description

### FUEL INJECTION (FUEL SYSTEMS)

(1) Clamp	(15) Pressure control solenoid valve	(27) Drain hose B
(2) Fuel return hose A	(16) Pressure control solenoid valve bracket	(28) Clip
(3) Fuel damper valve (Return)	(17) Drain hose C	(29) Clip
(4) Fuel return hose B	(18) Canister upper bracket	(30) Clamp
(5) Evaporation hose A	(19) Cushion rubber	(31) Pressure control solenoid valve hose
(6) Clip	(20) Canister lower bracket	(32) Clamp
(7) Fuel delivery hose A	(21) Canister	(33) Retainer
(8) Fuel delivery hose B	(22) Drain valve	(34) Clamp
(9) Fuel damper valve bracket	(23) Drain filter	
(10) Fuel damper valve (Delivery)	(24) Pressure control solenoid valve tube	
(11) Fuel pipe ASSY	(25) Drain hose A	
(12) Evaporation hose B	(26) Connector drain	
(13) Joint pipe		
(14) Canister hose A		

---

***Tightening torque: N·m (kgf-m, ft-lb)***

***T1: 25 (2.5, 18.1)***

***T2: 23 (2.3, 16.6)***

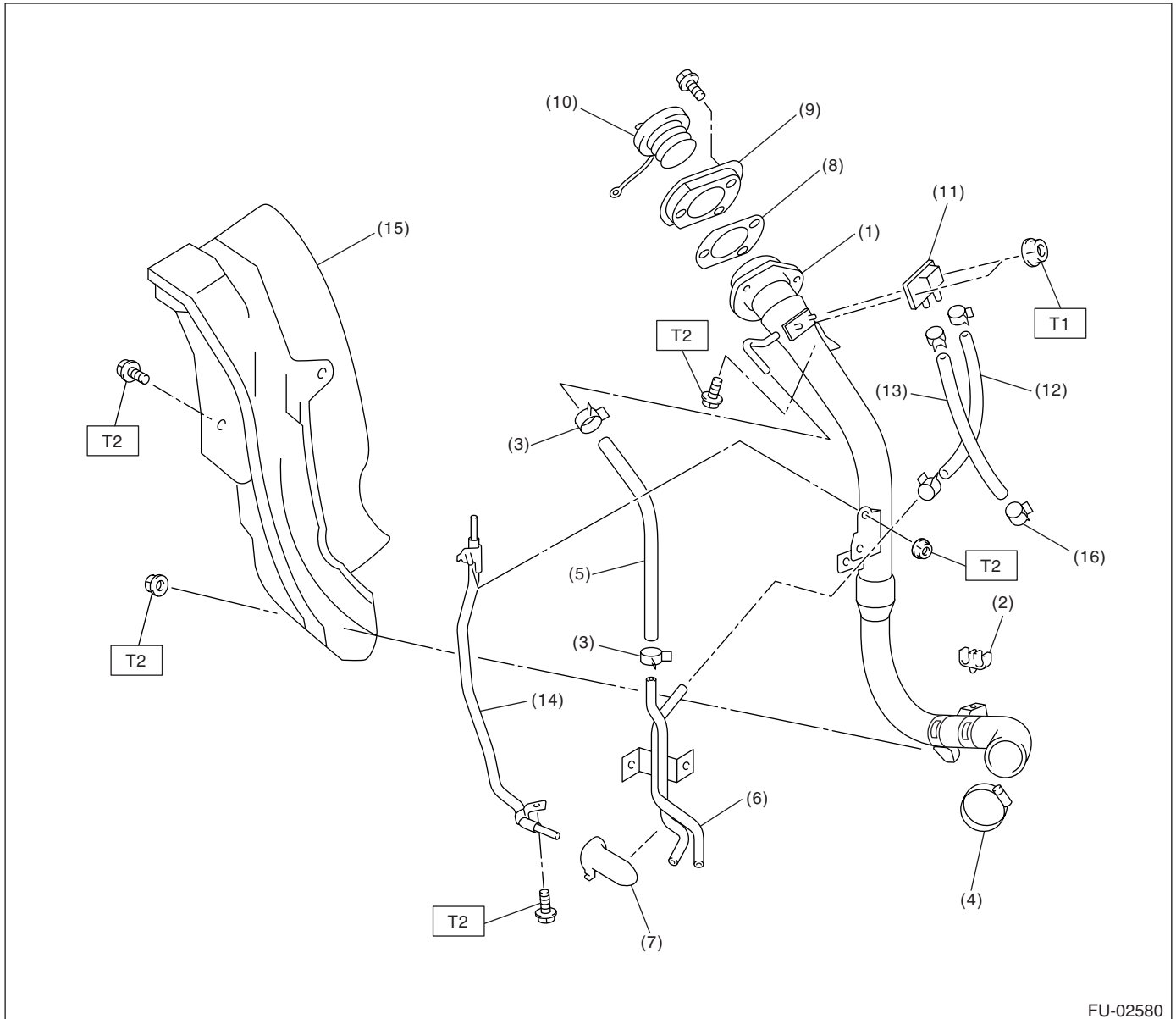
***T3: 1.25 (0.13, 0.9)***

---

# General Description

FUEL INJECTION (FUEL SYSTEMS)

## 6. FUEL FILLER PIPE



FU-02580

- |                             |                         |                                 |
|-----------------------------|-------------------------|---------------------------------|
| (1) Fuel filler pipe ASSY   | (8) Filler pipe packing | (15) Fuel filler pipe protector |
| (2) Evaporation hose holder | (9) Filler ring         | (16) Clamp                      |
| (3) Clip                    | (10) Filler cap         |                                 |
| (4) Clamp                   | (11) Shut valve         |                                 |
| (5) Evaporation hose A      | (12) Evaporation hose B |                                 |
| (6) Evaporation pipe        | (13) Evaporation hose C |                                 |
| (7) Evaporation pipe holder | (14) Joint pipe         |                                 |

**Tightening torque: N·m (kgf-m, ft-lb)**

**T1: 4.4 (0.45, 3.3)**

**T2: 7.5 (0.76, 5.5)**

## General Description

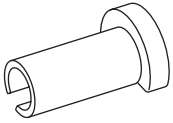
### FUEL INJECTION (FUEL SYSTEMS)

---

#### C: CAUTION

- Wear work clothing, including a cap, protective goggles and protective shoes during operation.
- Remove contamination including dirt and corrosion before removal, installation or disassembly.
- Keep the disassembled parts in order and protect them from dust and dirt.
- Before removal, installation or disassembly, be sure to clarify the failure. Avoid unnecessary removal, installation, disassembly and replacement.
- Be careful not to burn yourself, because each part on the vehicle is hot after running.
- Be sure to tighten fasteners including bolts and nuts to the specified torque.
- Place shop jacks or rigid racks at the specified points.
- Before disconnecting connectors of sensors or units, be sure to disconnect the ground cable from battery.
- Place "NO FIRE" signs near the working area.
- Be careful not to spill fuel on the floor.

#### D: PREPARATION TOOL

ILLUSTRATION	TOOL NUMBER	DESCRIPTION	REMARKS
  ST42099AE000	42099AE000	CONNECTOR REMOVER	Removal of quick connector