

Vent Valve

EMISSION CONTROL (AUX. EMISSION CONTROL DEVICES)

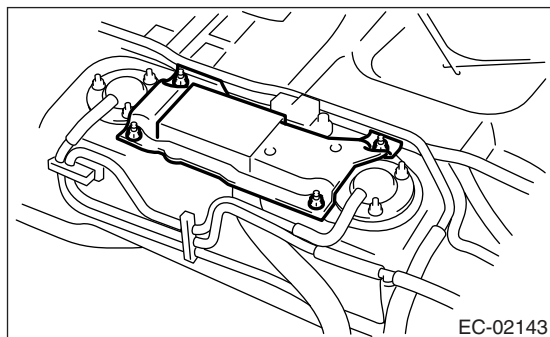
14.Vent Valve

A: REMOVAL

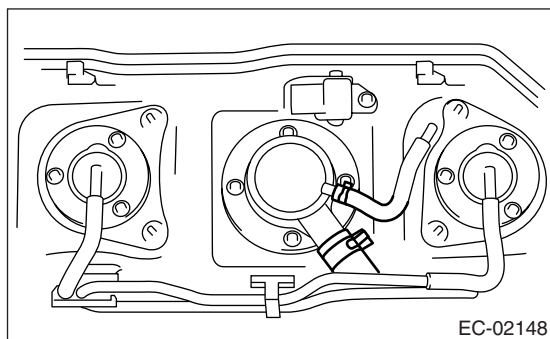
WARNING:

- Place “NO FIRE” signs near the working area.
- Be careful not to spill fuel.

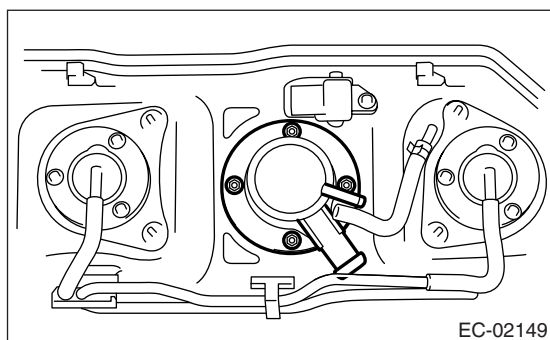
- 1) Remove the fuel tank. <Ref. to FU(H4DOTC)-51, REMOVAL, Fuel Tank.>
- 2) Remove the protect cover.



- 3) Remove the clip and disconnect the hose from the vent valve.



- 4) Remove the nut and then remove the vent valve.



B: INSTALLATION

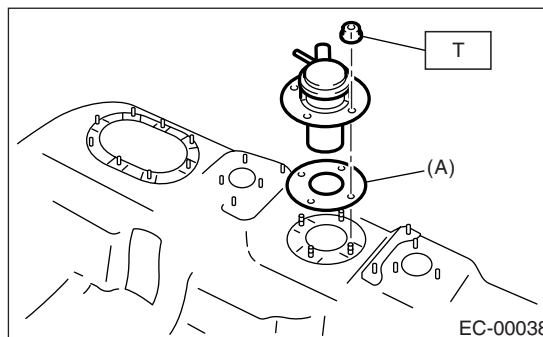
Install in the reverse order of removal.

NOTE:

Always use new gasket.

Tightening torque:

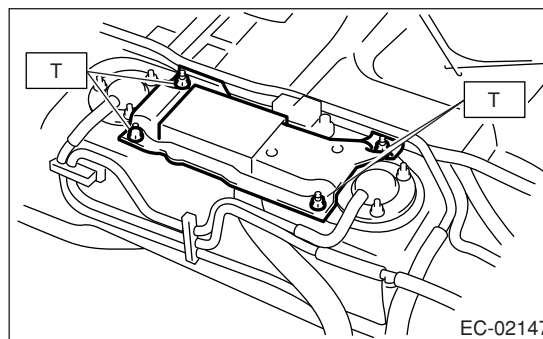
4.4 N·m (0.45 kgf-m, 3.3 ft-lb)



(A) Gasket

Tightening torque:

4.4 N·m (0.45 kgf-m, 3.3 ft-lb)



C: INSPECTION

Make sure the hoses are not cracked or loose.