

General Description

LUBRICATION

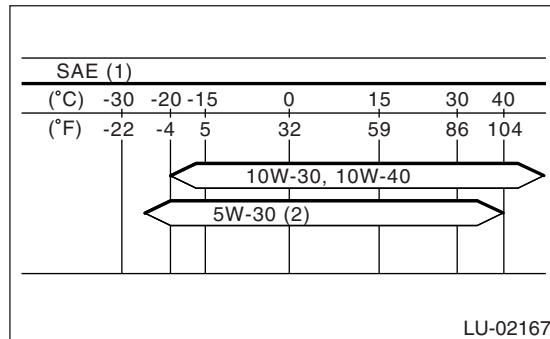
1. General Description

A: SPECIFICATION

| | | | |
|----------------------------------|--|---------------------------------|--|
| Lubrication method | | | Forced lubrication |
| Oil pump | Pump type | | Trochoid type |
| | Number of teeth | Inner rotor | 9 |
| | | Outer rotor | 10 |
| | Outer rotor diameter × thickness | | 78 × 10 mm (3.07 × 0.39 in) |
| | Tip clearance between inner and outer rotors | Specification | 0.04 — 0.14 mm (0.0016 — 0.0055 in) |
| | | Limit | 0.18 mm (0.0071 in) |
| | Side clearance between inner rotor and pump case | Specification | 0.02 — 0.07 mm (0.0008 — 0.0028 in) |
| | | Limit | 0.12 mm (0.0047 in) |
| | Case clearance between outer rotor and pump case | Specification | 0.10 — 0.175 mm (0.0039 — 0.0069 in) |
| | | Limit | 0.20 mm (0.0079 in) |
| | Performance (Oil temperature 80°C (176°F)) | 600 rpm | Discharge pressure |
| Discharge rate | | | 4.6 ℓ (4.9 US qt, 4.0 Imp qt)/min. |
| 5,000 rpm | | Discharge pressure | 294 kPa (3.0 kgf/cm ² , 43 psi) |
| | | Discharge rate | 47.0 ℓ (49.7 US qt, 41.4 Imp qt)/min. |
| Relief valve working pressure | | | 588 kPa (6.0 kgf/cm ² , 85 psi) |
| Oil filter | Filter type | | Full-flow filter type |
| | Filtration area | Outer diameter: 68 mm (2.68 in) | 800 cm ² (124 sq in) |
| | | Outer diameter: 65 mm (2.56 in) | 470 cm ² (73 sq in) |
| | By-pass valve opening pressure | | 160 kPa (1.63 kgf/cm ² , 23.2 psi) |
| | Outer diameter × width | Outer diameter: 68 mm (2.68 in) | 68 × 65 mm (2.68 × 2.56 in) |
| | | Outer diameter: 65 mm (2.56 in) | 65 × 74.4 mm (2.56 × 2.93 in) |
| Installation bolt specifications | | | M 20 × 1.5 |
| Oil pressure switch | Type | | Immersed contact point type |
| | Operating voltage — wattage | | 12 V — 3.4 W or less |
| | Warning light operating pressure | | 14.7 kPa (0.15 kgf/cm ² , 2.1 psi) |
| | Proof pressure | | 981 kPa (10 kgf/cm ² , 142 psi) or more |
| Engine oil | Capacity (at overhaul) | Non-turbo | 4.8 ℓ (5.2 US qt, 4.3 Imp qt) |
| | | Turbo | 5.0 ℓ (5.4 US qt, 4.5 Imp qt) |
| | When replacing engine oil and oil filter | Non-turbo | AT: 4.3 ℓ (4.5 US qt, 3.8 Imp qt) MT: 4.2 ℓ (4.4 US qt, 3.7 Imp qt) |
| | | Turbo | 4.3 ℓ (4.5 US qt, 3.8 Imp qt) |
| | When replacing engine oil only | Non-turbo | 4.0 ℓ (4.2 US qt, 3.5 Imp qt) |
| | | Turbo | 4.0 ℓ (4.2 US qt, 3.5 Imp qt) |

Recommended oil:

**Items having the API standard SL “Energy Conserving” logo
ILSAC standard GF-4 “starburst mark” displayed on container top.**



- (1) SAE viscosity No. and applicable temperature
- (2) Recommended

CAUTION:

It is acceptable to fill an engine with oil of another name when replacing oil, but use an API standard specified by Subaru or one that has SAE viscosity number.

NOTE:

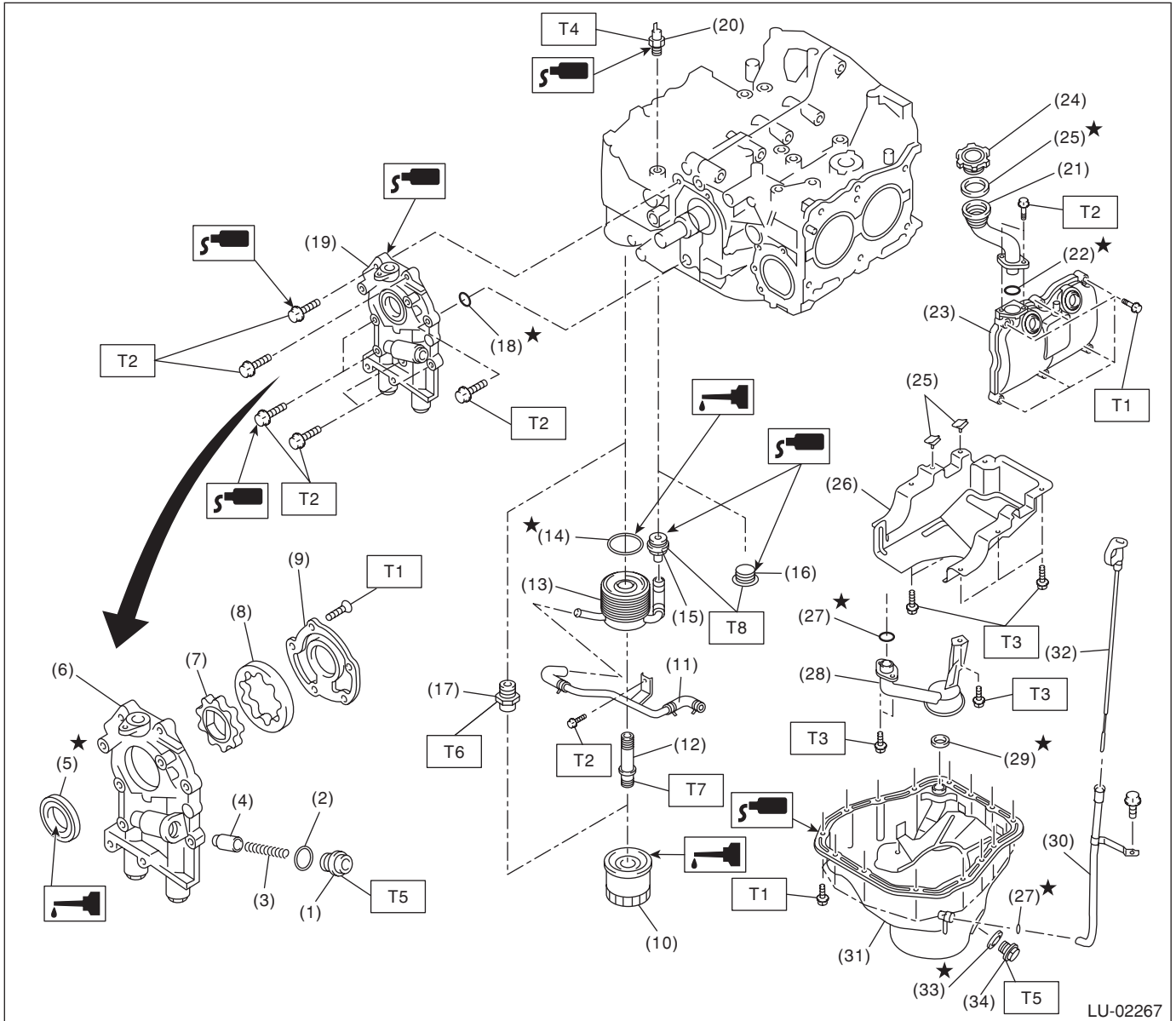
Use an oil with the viscosity shown below if the vehicle is used in regions of high temperature, or in severe environments. API standard: SM or SL
SAE viscosity No.: 30, 40, 10W-50, 20W-40, 20W-50

General Description

LUBRICATION

B: COMPONENT

1. Non-turbo model



LU(H4SO)-4

General Description

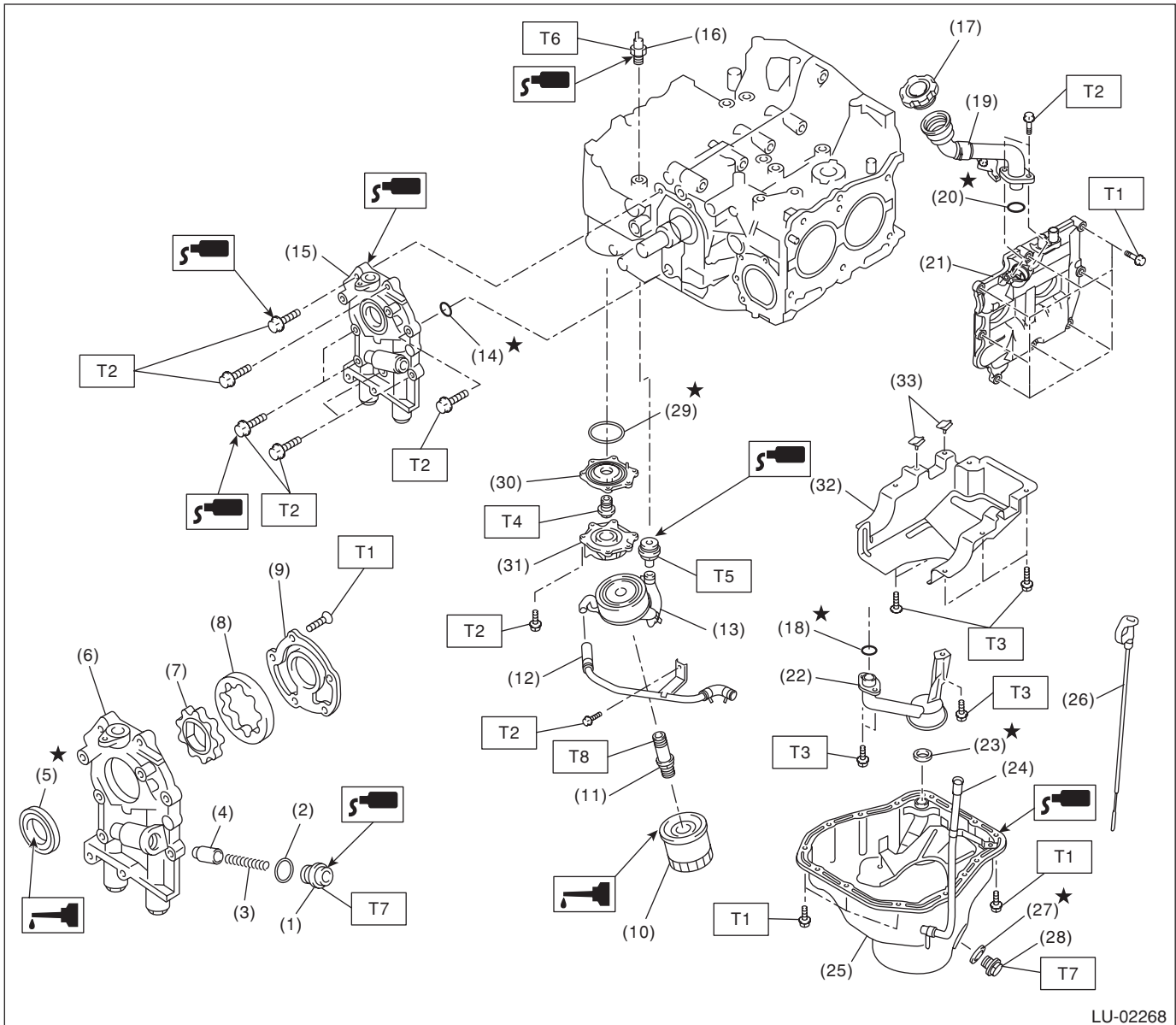
LUBRICATION

| | | |
|--|--------------------------------------|--|
| (1) Plug | (16) Plug (MT model) | (31) Oil pan |
| (2) Gasket | (17) Oil filter connector (MT model) | (32) Oil level gauge |
| (3) Relief valve spring | (18) O-ring | (33) Metal gasket |
| (4) Relief valve | (19) Oil pump ASSY | (34) Drain plug |
| (5) Oil seal | (20) Oil pressure switch | |
| (6) Oil pump case | (21) Oil filler duct | <hr/> |
| (7) Inner rotor | (22) O-ring | Tightening torque: N·m (kgf-m, ft-lb) |
| (8) Outer rotor | (23) Rocker cover | T1: 5 (0.5, 3.6) |
| (9) Oil pump cover | (24) Oil filler cap | T2: 6.4 (0.65, 4.7) |
| (10) Oil filter | (25) Seal | T3: 10 (1.0, 7.2) |
| (11) Oil cooler pipe and hose ASSY (AT model) | (26) Baffle plate | T4: 25 (2.5, 18.1) |
| (12) Connector (AT model) | (27) O-ring | T5: 44 (4.5, 32.5) |
| (13) Oil cooler (AT model) | (28) Oil strainer | T6: 45 (4.6, 33.2) |
| (14) O-ring (AT model) | (29) Gasket | T7: 54 (5.5, 40) |
| (15) Nipple (AT model) | (30) Oil level gauge guide | T8: 69 (7.0, 51) |
| | | T9: 5.4 (0.55, 4.0) |

General Description

LUBRICATION

2. Turbo model



LU-02268

- | | |
|---------------------------|----------------------------|
| (1) Plug | (16) Oil pressure switch |
| (2) Gasket | (17) Oil filler cap |
| (3) Relief valve spring | (18) O-ring |
| (4) Relief valve | (19) Oil filler duct |
| (5) Oil seal | (20) O-ring |
| (6) Oil pump case | (21) Rocker cover |
| (7) Inner rotor | (22) Oil strainer |
| (8) Outer rotor | (23) Gasket |
| (9) Oil pump cover | (24) Oil level gauge guide |
| (10) Oil filter | (25) Oil pan |
| (11) Oil cooler connector | (26) Oil level gauge |
| (12) Water by-pass pipe | (27) Metal gasket |
| (13) Oil cooler | (28) Drain plug |
| (14) O-ring | (29) Gasket |
| (15) Oil pump ASSY | (30) Adapter (1) |

- | |
|-------------------|
| (31) Adapter (2) |
| (32) Baffle plate |
| (33) Seal |
| (34) O-ring |

Tightening torque: N-m (kgf-m, ft-lb)

T1: 5 (0.5, 3.6)

T2: 6.4 (0.65, 4.7)

T3: 10 (1.0, 7.2)

T4: 45 (4.6, 33.2)

T5: 69 (7.0, 51)

T6: 25 (2.5, 18.1)

T7: 44 (4.5, 32.5)

T8: 54 (5.5, 40)

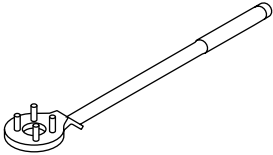
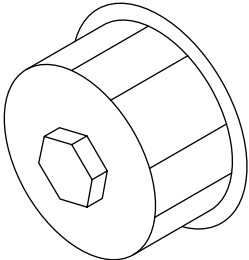
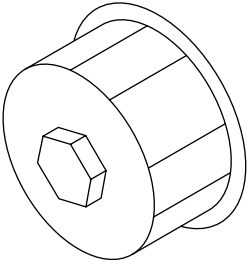
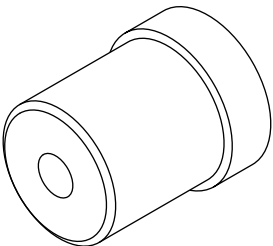
T9: 5.4 (0.55, 4.0)

LU(H4SO)-6

C: CAUTION

- Wear work clothing, including a cap, protective goggles and protective shoes during operation.
- Remove contamination including dirt and corrosion before removal, installation or disassembly.
- Keep the disassembled parts in order and protect them from dust and dirt.
- Before removal, installation or disassembly, be sure to clarify the failure. Avoid unnecessary removal, installation, disassembly and replacement.
- Be careful not to burn your hands, because each part on the vehicle is hot after running.
- Be sure to tighten fasteners including bolts and nuts to the specified torque.
- Place shop jacks or rigid racks at the specified points.
- Before disconnecting connectors of sensors or units, be sure to disconnect the ground cable from battery.

D: PREPARATION TOOL

| ILLUSTRATION | TOOL NUMBER | DESCRIPTION | REMARKS |
|---|-------------|------------------------|---|
|  ST-499977100 | 499977100 | CRANK PULLEY WRENCH | Used for stopping rotation of crank pulley when loosening and tightening the crank pulley bolt. |
|  ST18332AA000 | 18332AA000 | OIL FILTER WRENCH | Used for removing and installing oil filter. (Outer diameter 68 mm (2.68 in)) |
|  ST18332AA010 | 18332AA010 | OIL FILTER WRENCH | Used for removing and installing oil filter. (Outer diameter 65 mm (2.56 in)) |
|  ST-499587100 | 499587100 | OIL SEAL INSTALLER | Used for installing oil seal into oil pump. |