

General Description

FUEL INJECTION (FUEL SYSTEMS)

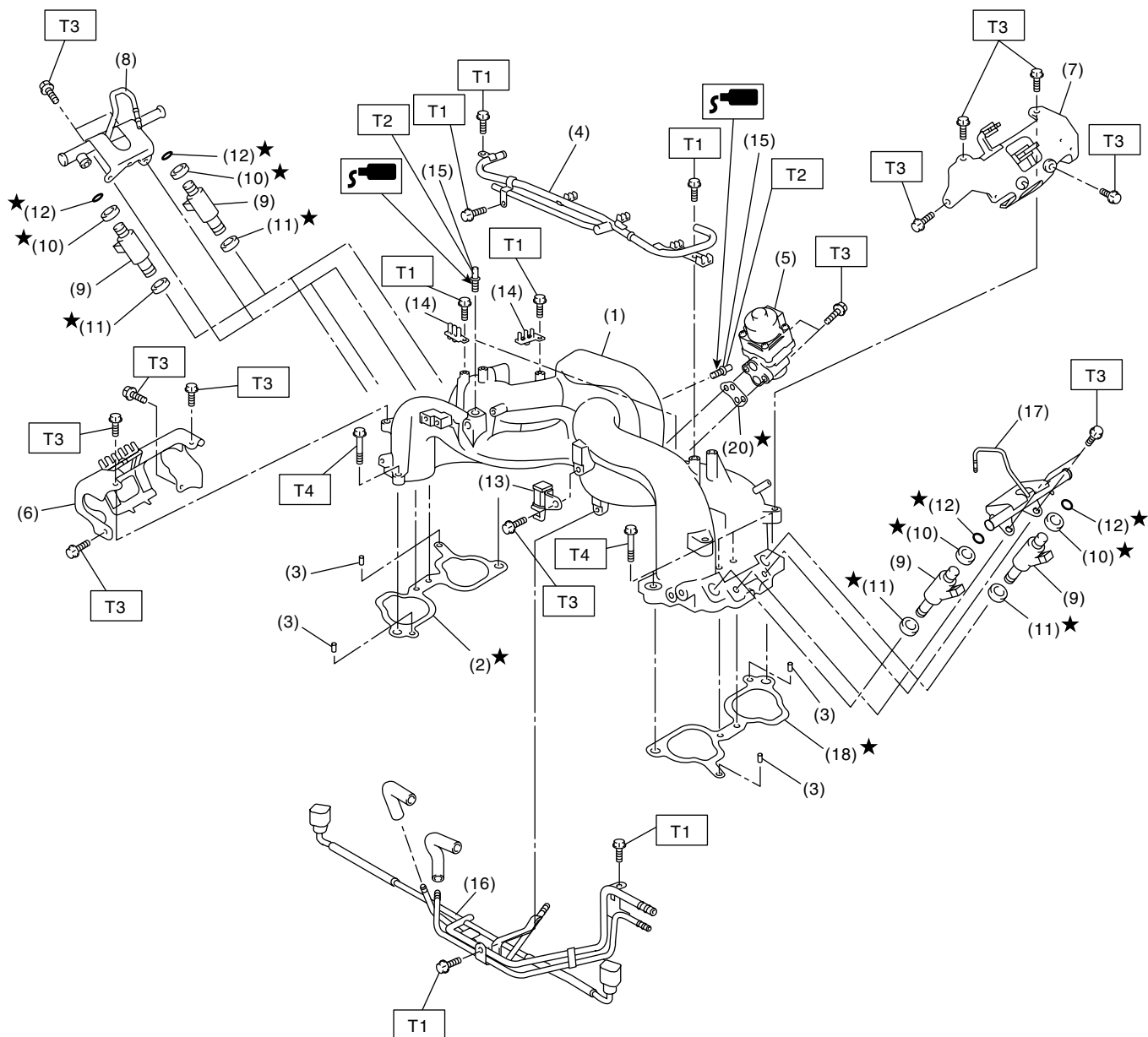
1. General Description

A: SPECIFICATION

Item		Specification
Fuel tank	Capacity	60 ℓ (15.9 US gal, 13.2 Imp gal)
	Locations	Under rear seat
Fuel pump	Type	Impeller
	Shutoff discharge pressure	370 — 677 kPa (3.77 — 6.9 kg/cm ² , 53.6 — 98 psi)
	Discharge rate	105 ℓ (27.7 US gal, 23.1 Imp gal)/h or more. [300 kPa, 12 V (3.06 kg/cm ² , 43.5 psi)]
Fuel filter		Intank type

B: COMPONENT

1. INTAKE MANIFOLD



FU-02708

General Description

FUEL INJECTION (FUEL SYSTEMS)

- | | | |
|----------------------------|-----------------------------------|----------------------------|
| (1) Intake manifold | (9) Fuel injector | (17) Fuel injector pipe LH |
| (2) Gasket (RH) | (10) O-ring | (18) Gasket (LH) |
| (3) Guide pin | (11) O-ring | |
| (4) PCV pipe | (12) O-ring | |
| (5) EGR valve | (13) Purge control solenoid valve | |
| (6) Fuel pipe protector RH | (14) Plug cord holder | |
| (7) Fuel pipe protector LH | (15) Nipple | |
| (8) Fuel injector pipe RH | (16) Fuel pipe | |

Tightening torque: N·m (kgf-m, ft-lb)

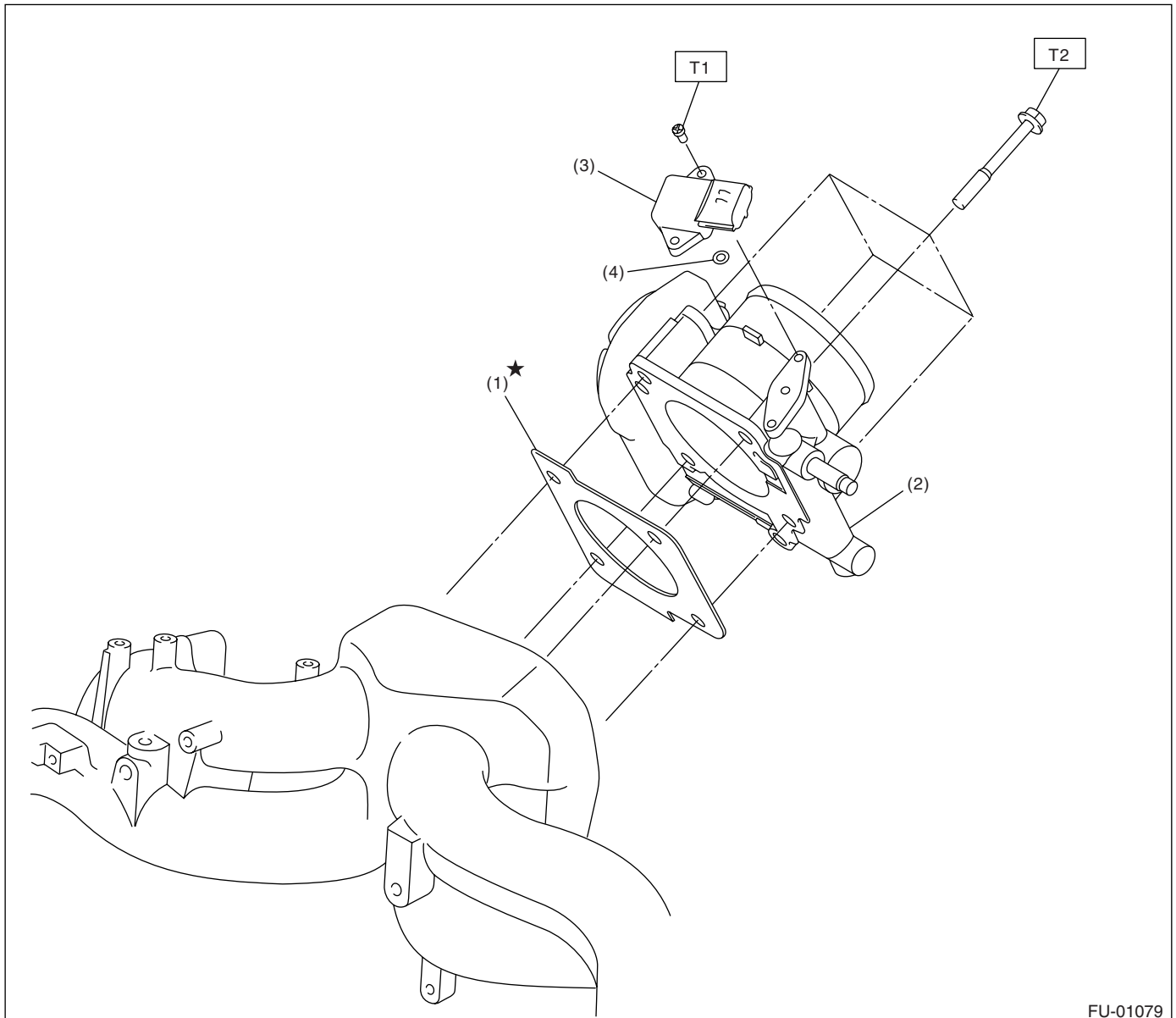
T1: 6.4 (0.65, 4.7)

T2: 17 (1.7, 12.5)

T3: 19 (1.9, 14.0)

T4: 25 (2.5, 18.1)

2. AIR INTAKE SYSTEM



FU-01079

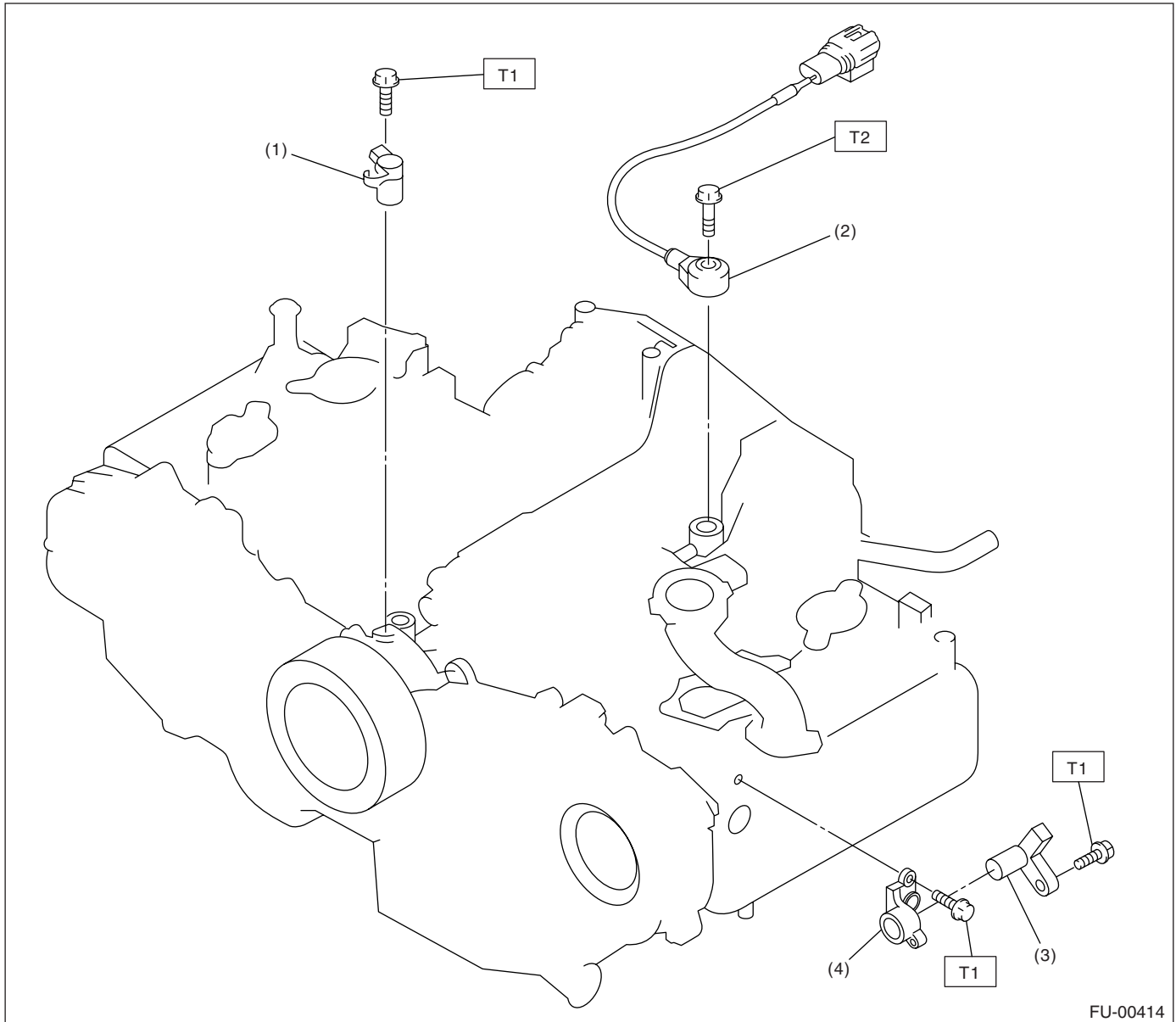
- | | |
|---------------------------------------|------------|
| (1) Gasket | (4) O-ring |
| (2) Throttle body | |
| (3) Manifold absolute pressure sensor | |

Tightening torque: N·m (kgf-m, ft-lb)

T1: 2.0 (0.20, 1.5)

T2: 8 (0.8, 5.8)

3. CRANKSHAFT POSITION, CAMSHAFT POSITION AND KNOCK SENSORS



- (1) Crankshaft position sensor
- (2) Knock sensor
- (3) Camshaft position sensor

- (4) Camshaft position sensor support

Tightening torque: N·m (kgf-m, ft-lb)

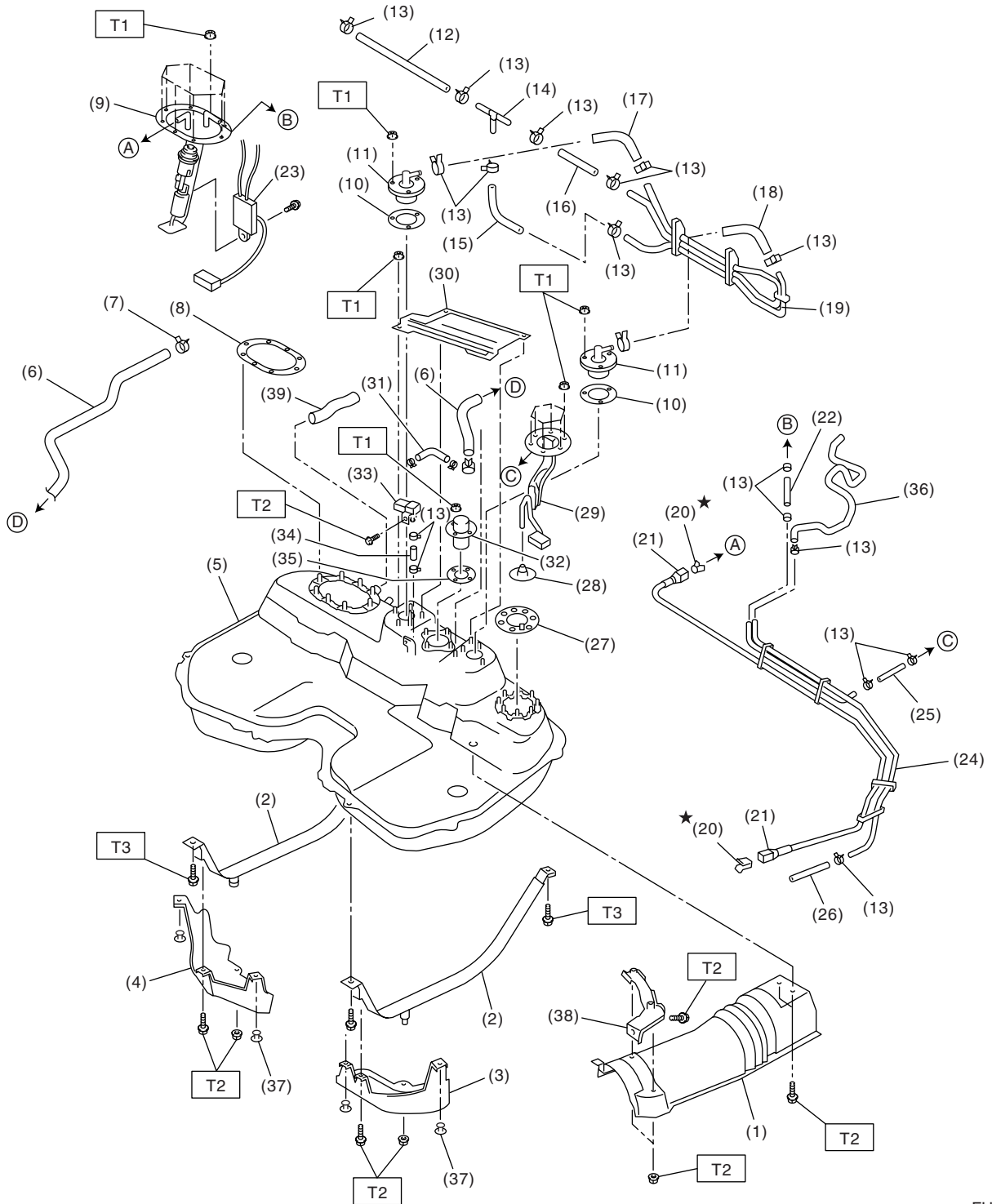
T1: 6.4 (0.65, 4.7)

T2: 24 (2.4, 17.4)

General Description

FUEL INJECTION (FUEL SYSTEMS)

4. FUEL TANK



FU-02709

General Description

FUEL INJECTION (FUEL SYSTEMS)

(1) Heat shield cover	(16) Fuel delivery tube	(31) Clip
(2) Fuel tank band	(17) Clamp	(32) Vent valve
(3) Protector LH	(18) Evaporation hose C	(33) Fuel tank pressure sensor
(4) Protector RH	(19) Evaporation pipe ASSY	(34) Fuel tank pressure sensor hose
(5) Fuel tank	(20) Retainer	(35) Vent valve gasket
(6) Canister hose A	(21) Quick connector	(36) Purge hose
(7) Clamp	(22) Jet pump hose A	(37) Clip
(8) Fuel pump gasket	(23) Fuel level sensor	(38) Cover bracket
(9) Fuel pump ASSY	(24) Fuel pipe ASSY	(39) Filler hose
(10) Fuel cut valve gasket	(25) Jet pump hose B	
(11) Fuel cut valve	(26) Evaporation hose D	
(12) Evaporation hose A	(27) Fuel sub level sensor gasket	
(13) Clip	(28) Jet pump filter	
(14) Joint pipe	(29) Fuel sub level sensor	
(15) Evaporation hose B	(30) Protect cover	

Tightening torque: N·m (kgf-m, ft-lb)

T1: 4.4 (0.45, 3.3)

T2: 7.4 (0.75, 5.4)

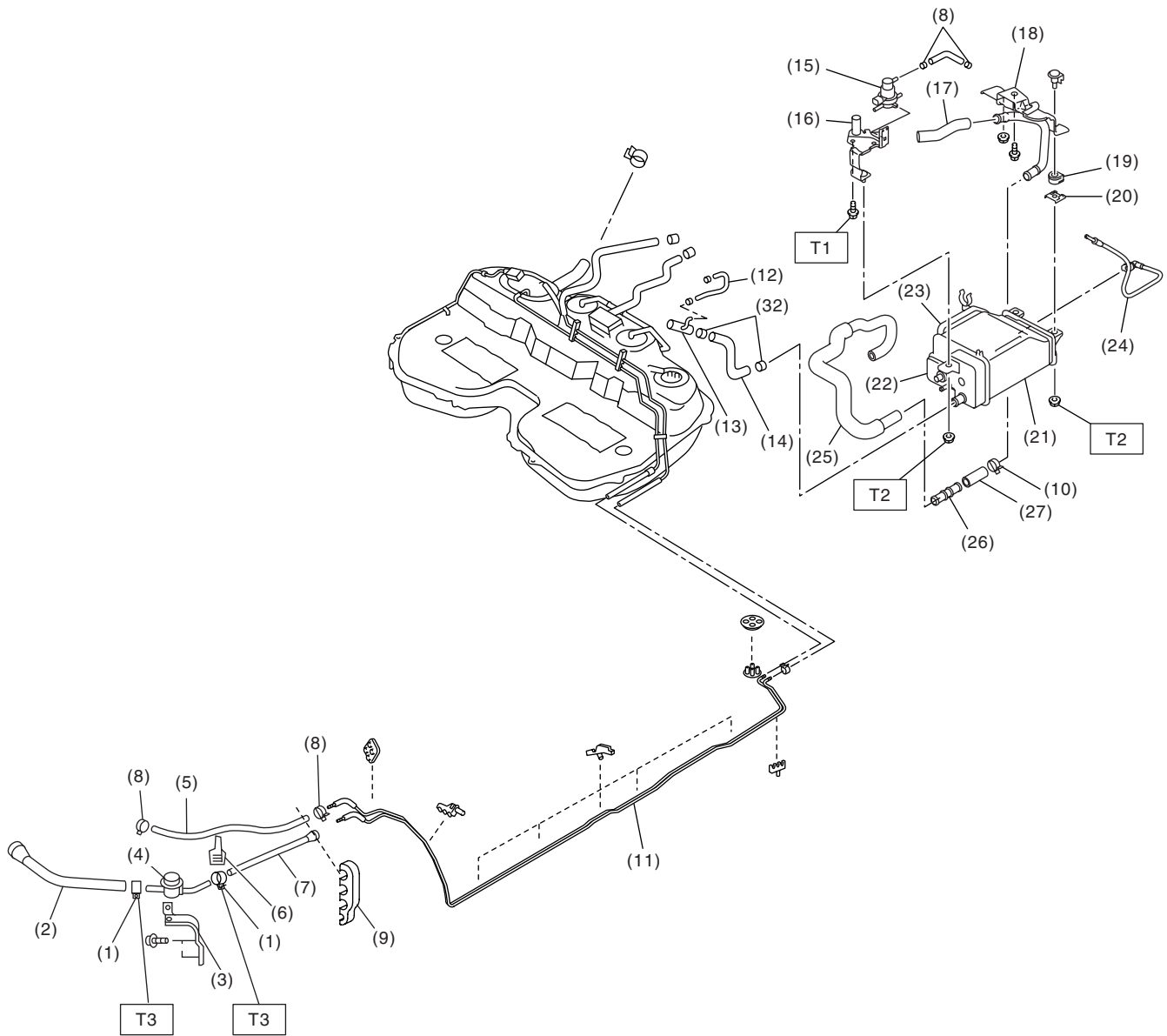
T3: 33 (3.4, 25)

T4: 1.96 (0.20, 1.45)

General Description

FUEL INJECTION (FUEL SYSTEMS)

5. FUEL LINE



FU-02710

FU(H4SO)-8

General Description

FUEL INJECTION (FUEL SYSTEMS)

(1) Clamp	(15) Pressure control solenoid valve	(26) Drain connector
(2) Fuel delivery hose A	(16) Pressure control solenoid valve bracket	(27) Drain hose B
(3) Fuel damper valve bracket	(17) Drain hose C	(28) Pressure control solenoid valve hose
(4) Fuel damper valve	(18) Canister upper bracket	(29) Clamp
(5) Evaporation hose A	(19) Cushion rubber	(30) Clamp
(6) Clip	(20) Canister lower bracket	(31) Retainer
(7) Fuel delivery hose B	(21) Canister	(32) Clamp
(8) Clip	(22) Drain valve	
(10) Clamp	(23) Drain filter	
(11) Fuel pipe ASSY	(24) Pressure control solenoid valve tube	
(12) Evaporation hose B	(25) Drain hose A	
(13) Joint pipe		
(14) Canister hose A		

Tightening torque: N·m (kgf-m, ft-lb)

T1: 25 (2.5, 18.1)

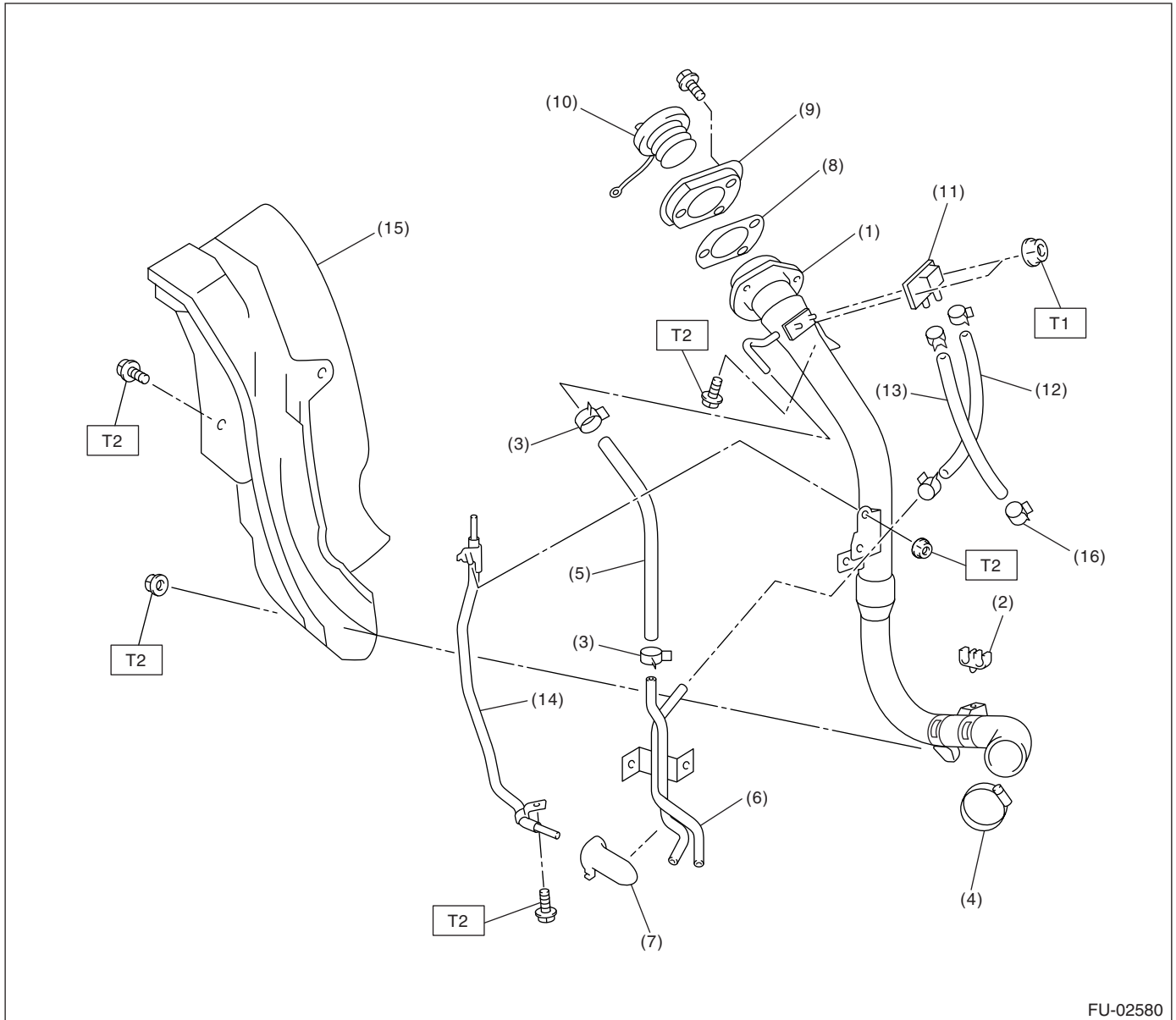
T2: 23 (2.3, 16.6)

T3: 1.25 (0.13, 0.94)

General Description

FUEL INJECTION (FUEL SYSTEMS)

6. FUEL FILLER PIPE



- (1) Fuel filler pipe ASSY
- (2) Evaporation hose holder
- (3) Clamp
- (4) Clamp
- (5) Evaporation hose A
- (6) Evaporation pipe
- (7) Evaporation pipe holder

- (8) Filler pipe packing
- (9) Filler ring
- (10) Filler cap
- (11) Shut valve
- (12) Evaporation hose B
- (13) Evaporation hose C
- (14) Joint pipe

- (15) Fuel filler pipe protector
- (16) Clamp

Tightening torque: N-m (kgf-m, ft-lb)

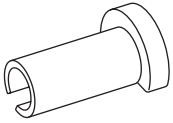
T1: 4.4 (0.45, 3.3)

T2: 7.5 (0.76, 5.5)

C: CAUTION

- Wear work clothing, including a cap, protective goggles and protective shoes during operation.
- Remove contamination including dirt and corrosion before removal, installation or disassembly.
- Keep the disassembled parts in order and protect them from dust and dirt.
- Before removal, installation or disassembly, be sure to clarify the failure. Avoid unnecessary removal, installation, disassembly and replacement.
- Be careful not to burn yourself, because each part on the vehicle is hot after running.
- Be sure to tighten fasteners including bolts and nuts to the specified torque.
- Place shop jacks or rigid racks at the specified points.
- Before disconnecting connectors of sensors or units, be sure to disconnect the ground cable from battery.
- Place "NO FIRE" signs near the working area.
- Be careful not to spill fuel on the floor.

D: PREPARATION TOOL

ILLUSTRATION	TOOL NUMBER	DESCRIPTION	REMARKS
 ST42099AE000	42099AE000	CONNECTOR REMOVER	Used for removing the quick connector.