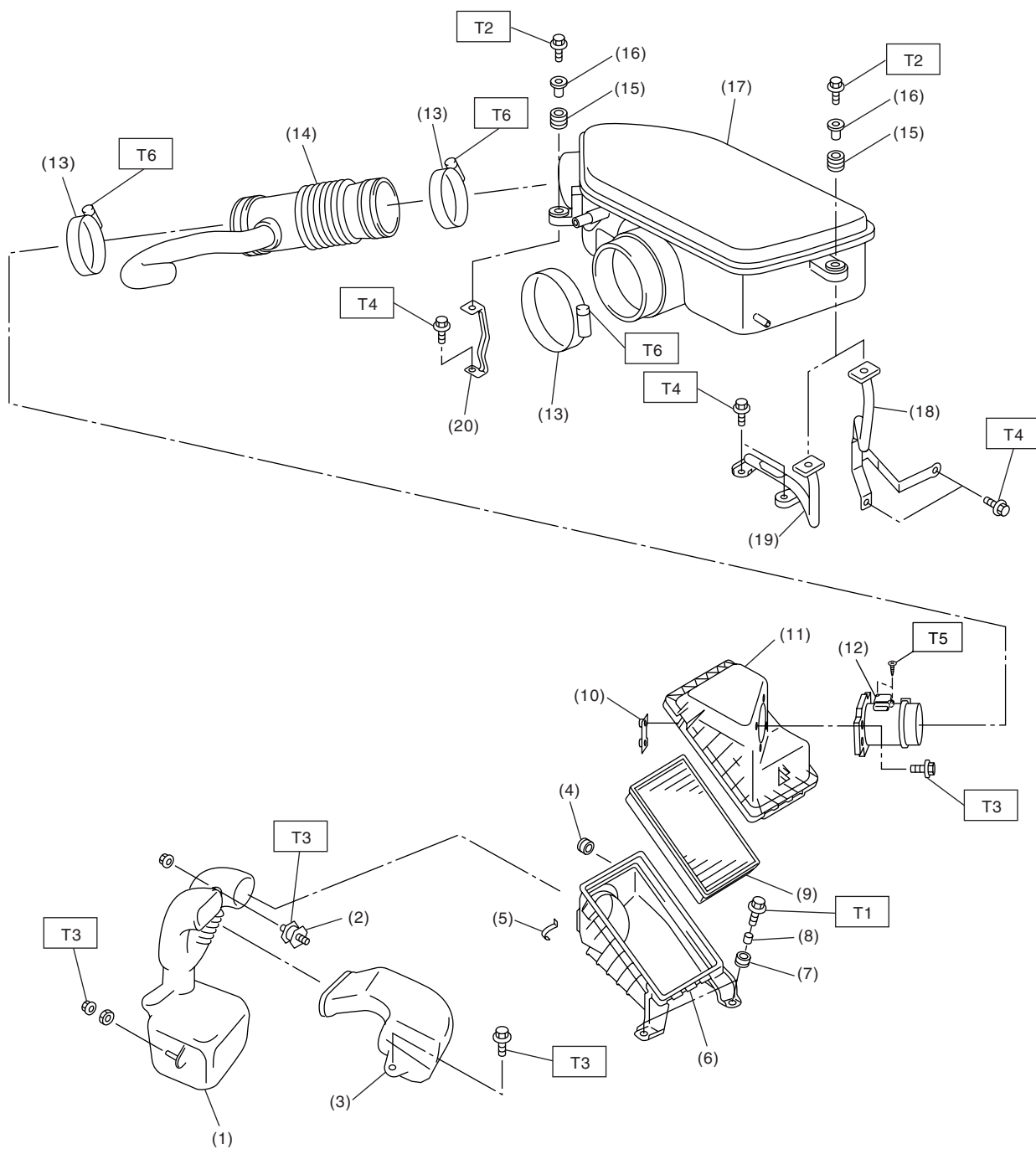


General Description

INTAKE (INDUCTION)

1. General Description

A: COMPONENT



IN-02136

IN(H4SO)-2

General Description

INTAKE (INDUCTION)

(1) Resonator chamber	(11) Air cleaner upper cover
(2) Cushion	(12) Air flow sensor
(3) Air intake duct	(13) Clamp
(4) Cushion	(14) Intake duct
(5) Clip	(15) Cushion
(6) Air cleaner lower case	(16) Spacer
(7) Cushion	(17) Air intake chamber
(8) Spacer	(18) Stay LH (MT model)
(9) Air cleaner element	(19) Stay LH (AT model)
(10) Guide	(20) Stay RH

Tightening torque: N·m (kgf-m, ft-lb)

T1: 33 (3.4, 24.6)

T2: 6.5 (0.66, 4.8)

T3: 7.5 (0.76, 5.5)

T4: 16 (1.6, 11.6)

T5: 1.0 (0.10, 0.7)

T6: 3.0 (0.3, 2.1)

B: CAUTION

- Wear work clothing, including a cap, protective goggles and protective shoes during operation.
- Remove contamination including dirt and corrosion before removal, installation or disassembly.
- Keep the disassembled parts in order and protect them from dust and dirt.
- Before removal, installation or disassembly, be sure to clarify the failure. Avoid unnecessary removal, installation, disassembly and replacement.
- Be careful not to burn yourself, because each part on the vehicle is hot after running.
- Be sure to tighten fasteners including bolts and nuts to the specified torque.
- Place shop jacks or rigid racks at the specified points.
- Before disconnecting connectors of sensors or units, be sure to disconnect the ground cable from battery.