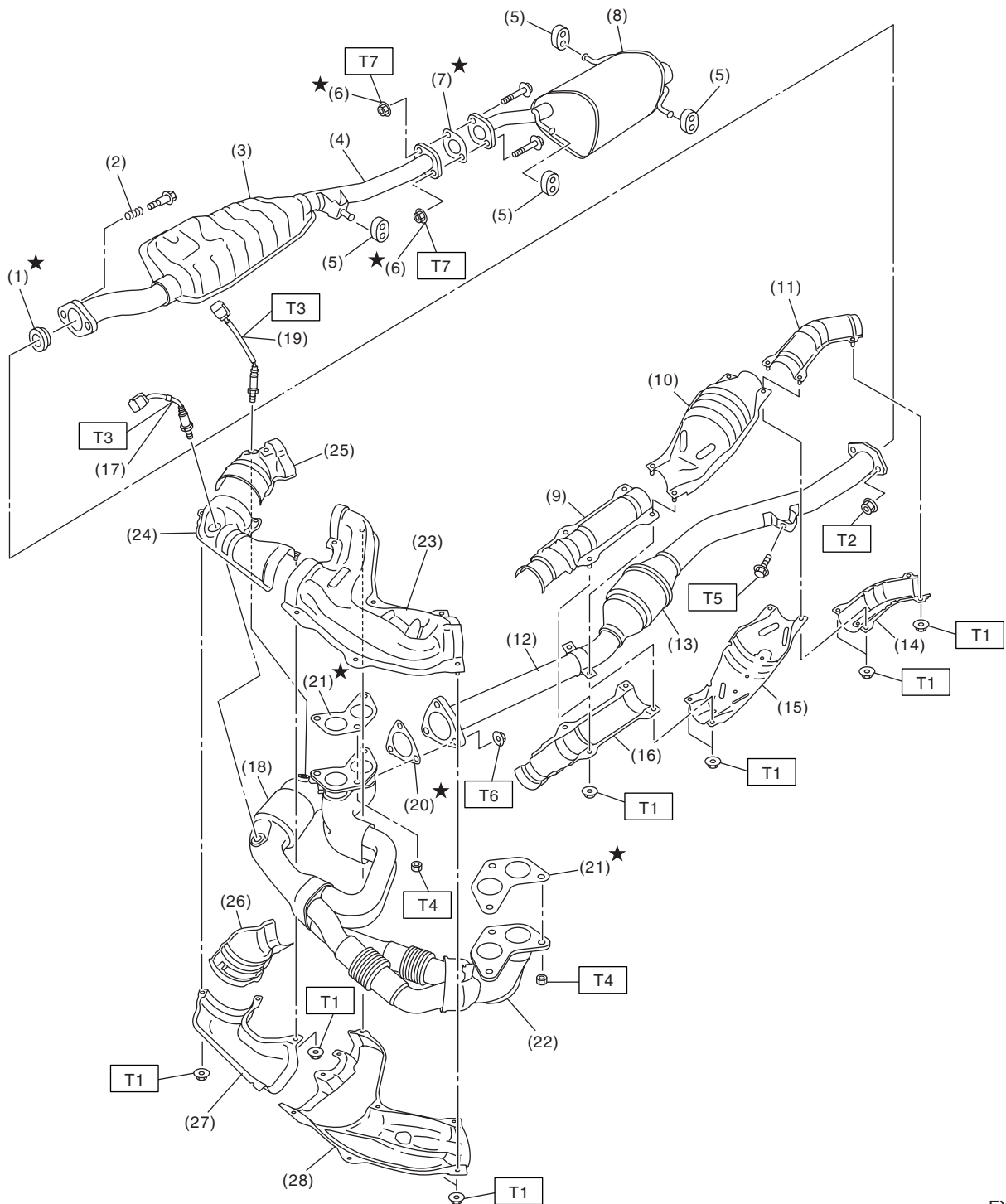


General Description

EXHAUST

1. General Description

A: COMPONENT



EX-02133

General Description

EXHAUST

(1) Gasket	(14) Center exhaust pipe rear lower cover	(25) Front catalytic converter upper cover
(2) Spring	(15) Rear catalytic converter lower cover	(26) Front catalytic converter lower cover
(3) Chamber	(16) Center exhaust pipe front lower cover	(27) Front exhaust pipe lower cover RH
(4) Rear exhaust pipe	(17) Front oxygen (A/F) sensor	(28) Front exhaust pipe lower cover LH
(5) Cushion rubber	(18) Front catalytic converter	
(6) Self-locking nut	(19) Rear oxygen sensor	
(7) Gasket	(20) Gasket	
(8) Muffler	(21) Gasket	
(9) Center exhaust pipe front upper cover	(22) Front exhaust pipe	
(10) Rear catalytic converter upper cover	(23) Front exhaust pipe upper cover LH	
(11) Center exhaust pipe rear upper cover	(24) Front exhaust pipe upper cover RH	
(12) Center exhaust pipe		
(13) Rear catalytic converter		

Tightening torque: N·m (kgf-m, ft-lb)

T1: 13 (1.3, 9.4)

T2: 18 (1.8, 13.0)

T3: 21 (2.1, 15.2)

T4: 30 (3.1, 22.4)

T5: 35 (3.6, 26.0)

T6: 40 (4.1, 29.5)

T7: 48 (4.9, 35.4)

B: CAUTION

- Wear work clothing, including a cap, protective goggles and protective shoes during operation.
- Remove contamination including dirt and corrosion before removal, installation or disassembly.
- Keep the disassembled parts in order and protect them from dust and dirt.
- Before removal, installation or disassembly, be sure to clarify the failure. Avoid unnecessary removal, installation, disassembly and replacement.
- Be careful not to burn yourself, because each part on the vehicle is hot after running.
- Be sure to tighten fasteners including bolts and nuts to the specified torque.
- Place shop jacks or rigid racks at the specified points.
- Before disconnecting connectors of sensors or units, be sure to disconnect the ground cable from battery.