

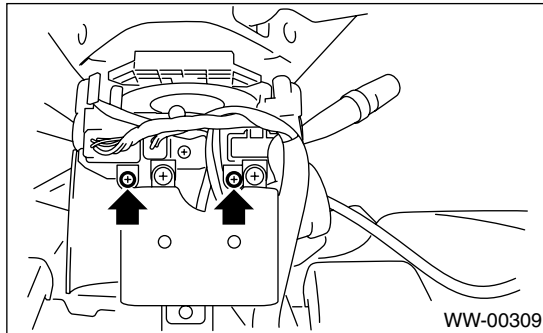
# Combination Switch (Wiper)

## WIPER AND WASHER SYSTEMS

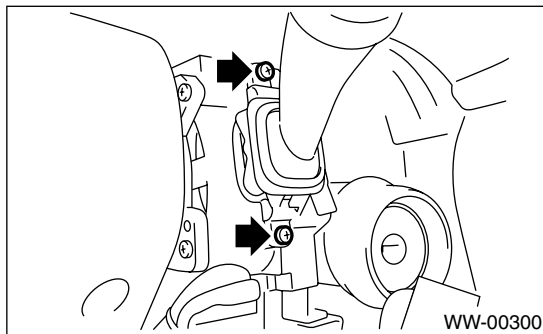
### 3. Combination Switch (Wiper)

#### A: REMOVAL

- 1) Disconnect the ground cable from battery.
- 2) Remove the instrument panel lower cover. <Ref. to EI-38, REMOVAL, Instrument Panel Assembly.>
- 3) Loosen the screw to remove a steering column lower cover.
- 4) Remove the steering column upper cover mounting screw.



- 5) Disconnect the connector from combination switch.
- 6) Loosen the screw to remove the combination switch.

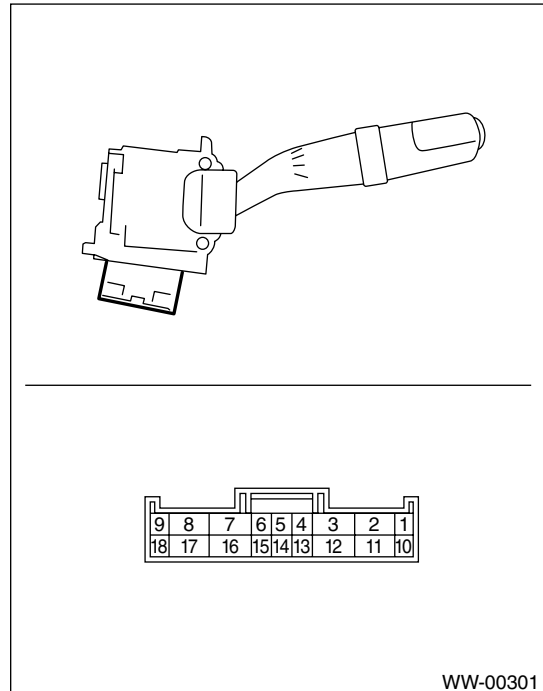


#### B: INSTALLATION

Install in the reverse order of removal.

#### C: INSPECTION

- Inspect the continuity between each connector terminal.



	Switch position	Terminal No.	Standard
Front	LO	7 and 17	Less than 1 $\Omega$
	HI	8 and 17	Less than 1 $\Omega$
	Washer ON	2 and 11	Less than 1 $\Omega$
Rear	Washer ON	2 and 12	Less than 1 $\Omega$
	OFF	Between any two of following terminals: 2, 10, 12, 13	1 M $\Omega$ or more
	INT	2 and 13	Less than 1 $\Omega$
	ON	2 and 10	Less than 1 $\Omega$
	Washer ON	2 and 10 10 and 12 2 and 12	Less than 1 $\Omega$

If continuity is not as specified, replace the switch.

- Intermittent operation inspection

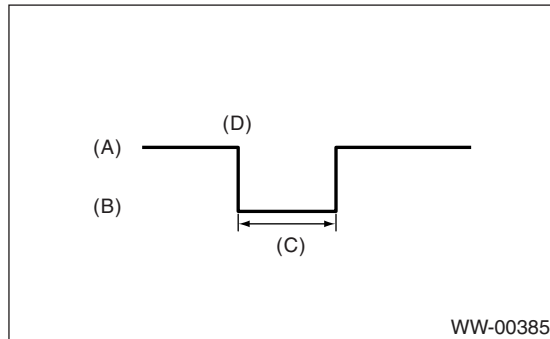
Inspect wiper switch separately

- 1) Set the voltmeter between switch terminal No.7 (+) and No. 2 (-).
- 2) Connect the battery between switch terminal No. 17 (+) and No. 2 (-)
- 3) Turn the front wiper switch to INT.
- 4) Connect the battery (+) to switch terminal No. 16 for 5 seconds.

5) Connect battery (–) to switch terminal No. 16 and measure the voltage during intermittent operation.

### **Terminals**

**No. 7 — No. 2:**



- (A) Approx. 12 V
- (B) Approx. 0 V
- (C) Intermittent stationary time
- (D) Connect battery (–) to terminal No. 16.

6) Perform step 1) to 5) when intermittent control switch is in MIN or MAX.

### **Intermittent stationary time:**

**MIN : Approx. 2 sec.**

**MAX : Approx. 16 sec.**

7) If operation is not as specified, replace the switch.