

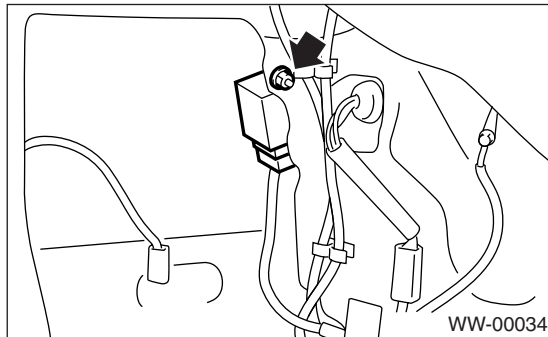
# Wiper Control Relay

## WIPER AND WASHER SYSTEMS

### 12. Wiper Control Relay

#### A: REMOVAL

- 1) Disconnect the ground cable from battery.
- 2) Remove the quarter lower trim RH. <Ref. to EI-43, REMOVAL, Rear Quarter Trim.>
- 3) Loosen the nut to remove the control unit.

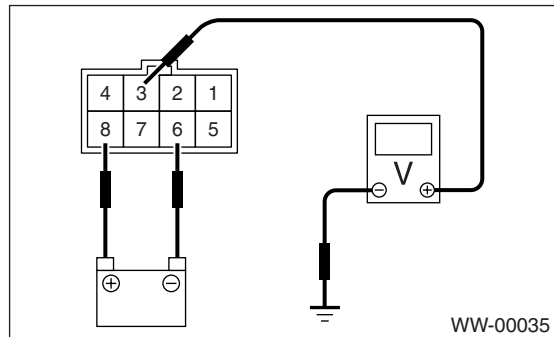


#### B: INSTALLATION

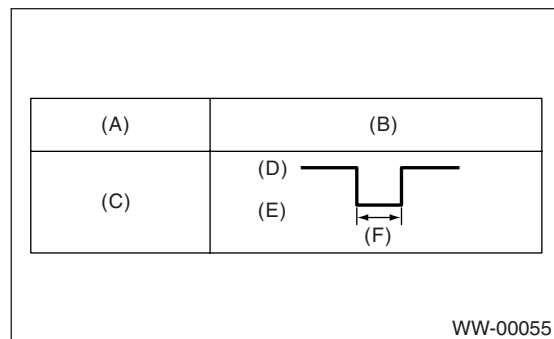
Install in the reverse order of removal.

#### C: INSPECTION

- 1) Disconnect the connector from the wiper control relay.
- 2) Connect the positive (+) probe from the battery to terminal 8 and the negative (-) probe to terminal 6. Connect the positive (+) probe from the voltage meter to terminal 3 and the negative (-) probe to the ground.



- 3) Measure the voltage when the wiper relay operates.



- (A) Switch position
- (B) Voltage
- (C) ON
- (D) 12 V
- (E) 0 V
- (F) 9±2 sec.

If operation is not as specified, replace the switch.

---

	Page
1. General Description .....	2
2. Radio System .....	3
3. Front Accessory Power Supply Socket System .....	4
4. Rear Accessory Power Supply Socket System .....	5
5. Radio Body .....	6
6. Tweeter .....	7
7. Front Speaker .....	8
8. Rear Speaker .....	9
9. Woofer .....	10
10. Antenna .....	11
11. Antenna Amplifier .....	12
12. Front Accessory Power Supply Socket .....	13
13. Rear Accessory Power Supply Socket .....	14