

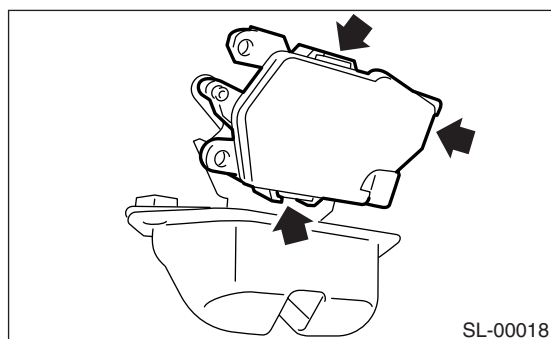
## 15. Rear Gate Latch Lock Actuator

### A: REMOVAL

- 1) Remove the rear gate latch assembly. <Ref. to SL-38, REMOVAL, Rear Gate Latch Assembly.>
- 2) Disconnect the three claws, and then remove the rear gate latch lock actuator from the rear gate latch assembly.

#### CAUTION:

**Do not apply excessive force to remove the actuator when removing it. This can deform the area around the rear gate latch assembly claws.**



### B: INSTALLATION

Install in the reverse order of removal.

#### CAUTION:

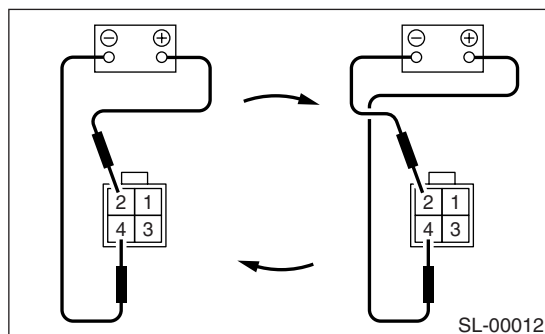
**Align the rear gate latch assembly lever groove and actuator lever.**

#### NOTE:

Make sure the lock works properly after installation.

### C: INSPECTION

- 1) Disconnect the door lock actuator harness connector.
- 2) Connect the battery to door lock actuator terminals.



Terminal No.	Actuator operation
No. 4 (+) and No. 2 (-)	Unlock → Lock
No. 2 (+) and No. 4 (-)	Lock → Unlock

If NG, replace the rear gate latch lock actuator.