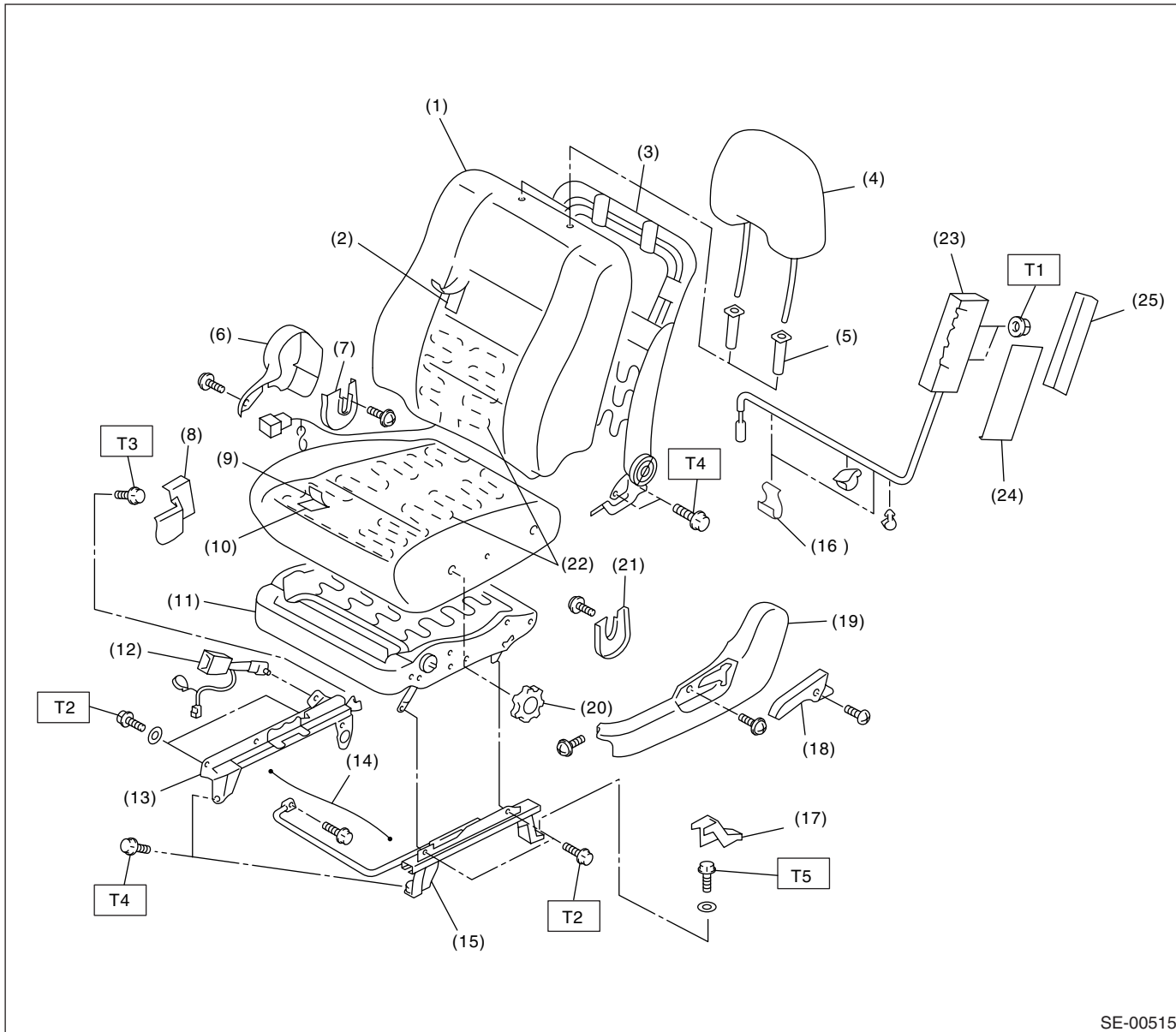


1. General Description

A: COMPONENT

1. FRONT SEAT

- Standard seat (driver's seat)



- (1) Backrest cover
- (2) Backrest pad
- (3) Backrest frame ASSY
- (4) Headrest ASSY
- (5) Headrest bushing
- (6) Seat hinge outer cover LH
- (7) Seat hinge inner cover LH
- (8) Bolt cover LH
- (9) Seat cushion cover
- (10) Seat cushion pad ASSY
- (11) Seat cushion frame ASSY

- (12) Inner belt
- (13) Inner slide rail
- (14) Connecting wire
- (15) Outer slide rail
- (16) Tape
- (17) Bolt cover RH
- (18) Reclining lever
- (19) Seat hinge outer cover RH
- (20) Seat lifter dial
- (21) Seat hinge inner cover RH
- (22) Seat heater unit

- (23) Side airbag module ASSY
- (24) Support pad A
- (25) Support pad B

Tightening torque: N·m (kgf-m, ft-lb)

T1: 7.5 (0.8, 5.5)

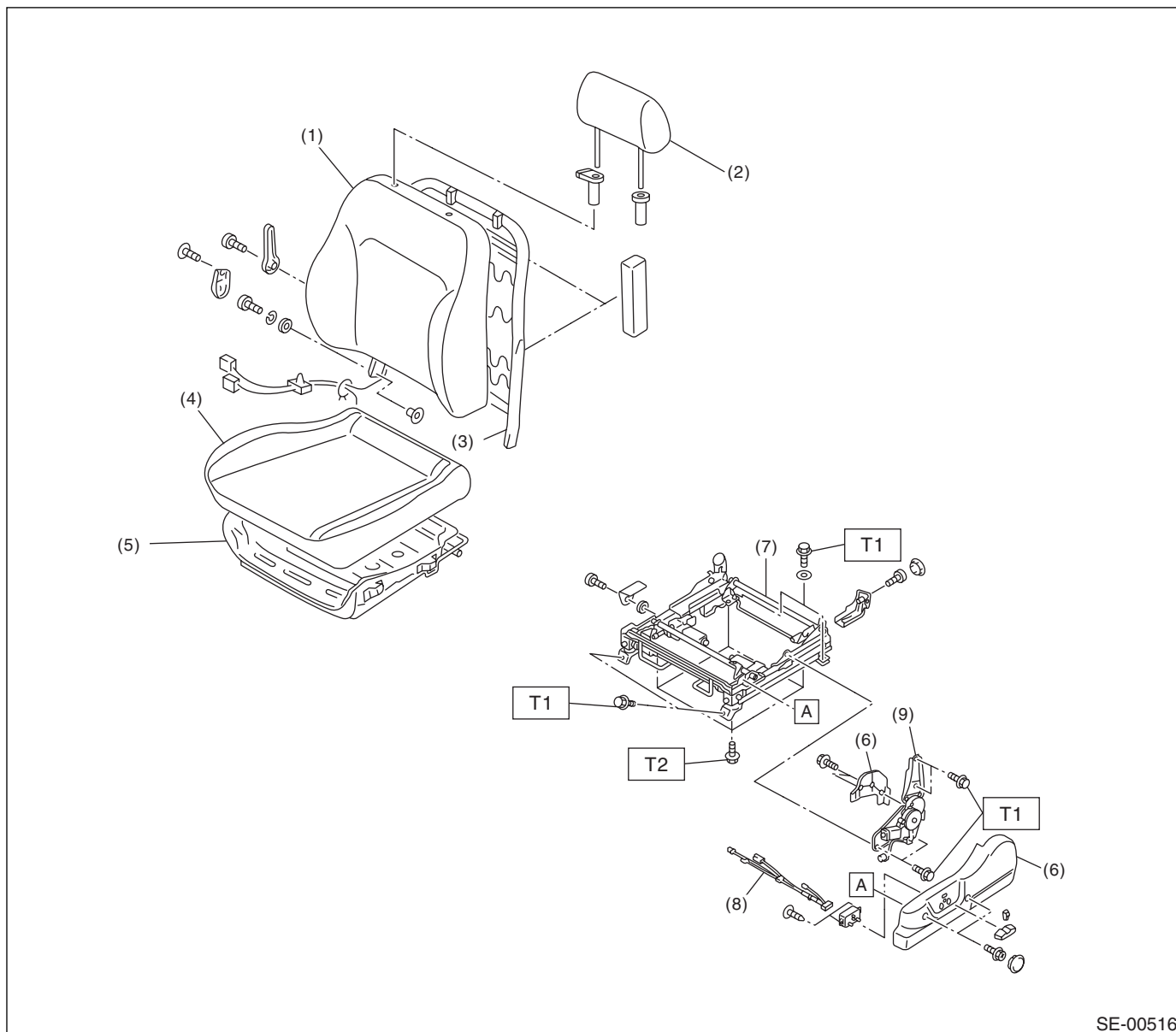
T2: 10 (1.0, 7.4)

T3: 30 (3.0, 22.1)

T4: 52 (5.3, 38.3)

T5: 53 (5.4, 39.0)

- Power seat (driver's seat)



SE-00516

- | | |
|-----------------------------|-------------------------|
| (1) Seat back pad | (6) Hinge cover |
| (2) Headrest | (7) Slide and unit ASSY |
| (3) Seat back frame ASSY | (8) Power seat harness |
| (4) Seat cushion pad | (9) Hinge ASSY |
| (5) Seat cushion frame ASSY | |

Tightening torque: N·m (kgf-m, ft-lb)

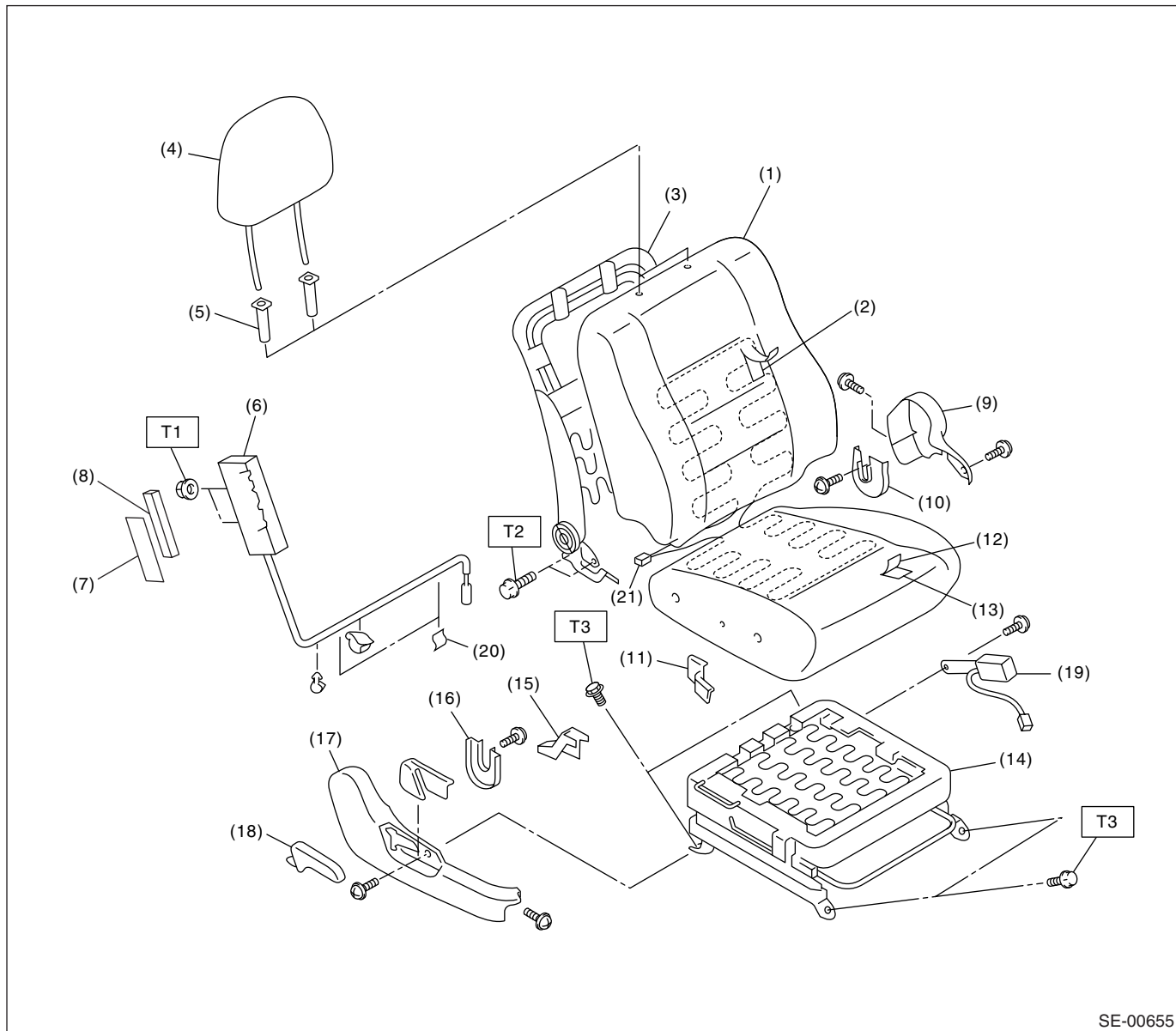
T1: 53 (5.4, 39)

T2: 18 (1.8, 13)

General Description

SEATS

- Standard seat (passenger's seat of vehicles before V.I.N. 733000)



- | | | |
|---------------------------|---|---------------------------|
| (1) Backrest cover | (10) Hinge inner cover LH | (18) Reclining lever |
| (2) Backrest pad | (11) Rear bolt cover inside | (19) Inner seat belt ASSY |
| (3) Backrest frame ASSY | (12) Seat cushion cover | (20) Tape |
| (4) Headrest ASSY | (13) Seat cushion pad | (21) Seat heater unit |
| (5) Headrest lock bushing | (14) Seat cushion frame and slide rail ASSY | |
| (6) Side airbag module | (15) Rear bolt cover outside | |
| (7) Support pad A | (16) Hinge inner cover RH | |
| (8) Support pad B | (17) Seat side cover outside | |
| (9) Seat cover inside | | |

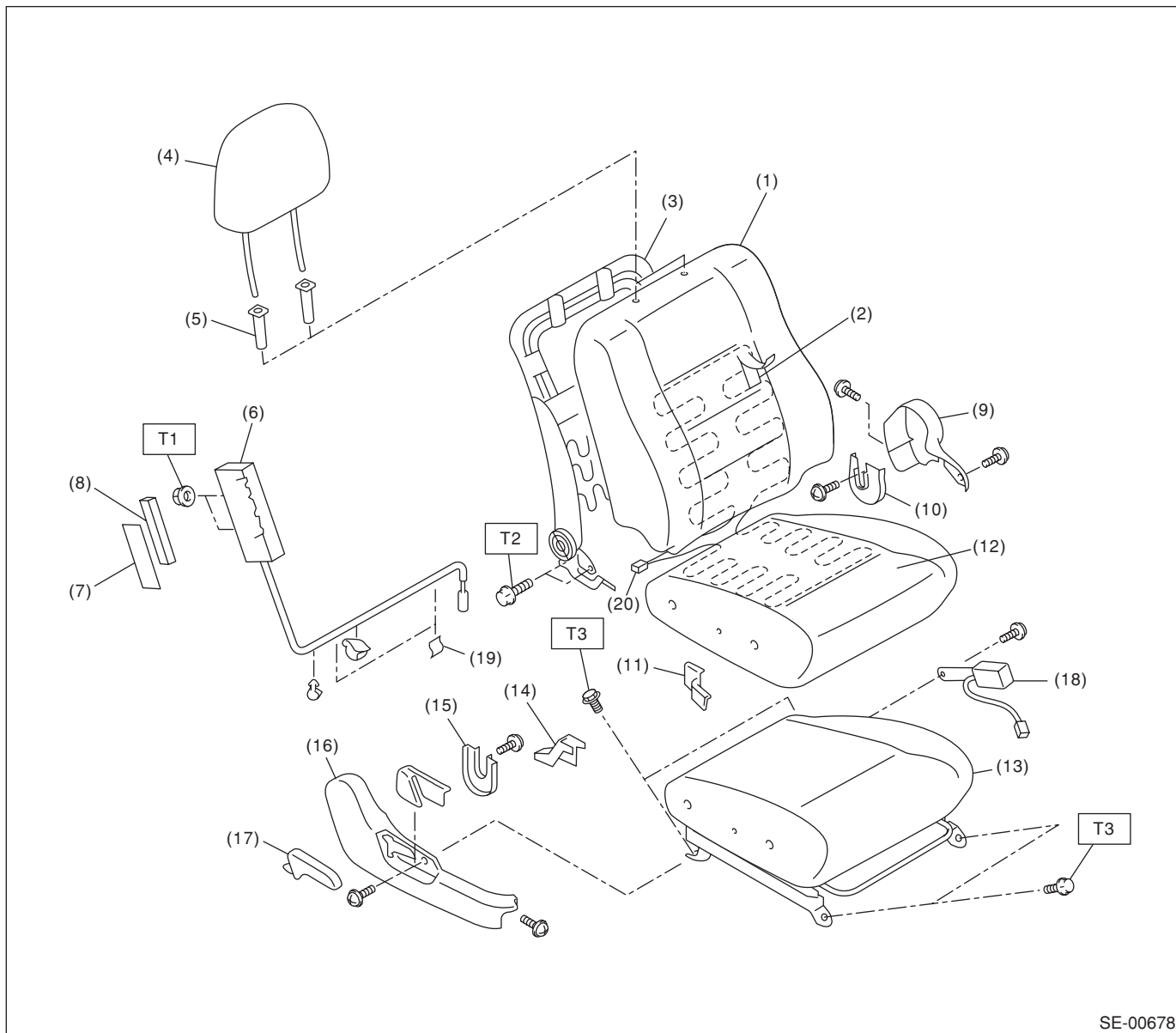
Tightening torque: N-m (kgf-m, ft-lb)

T1: 6 (0.61, 4.43)

T2: 52 (5.3, 38.4)

T3: 53 (5.4, 39.1)

- Standard seat (passenger's seat of vehicles after V.I.N. 733001)



- (1) Backrest cover
- (2) Backrest pad
- (3) Backrest frame ASSY
- (4) Headrest ASSY
- (5) Headrest lock bushing
- (6) Side airbag module
- (7) Support pad A
- (8) Support pad B
- (9) Seat cover inside

- (10) Hinge inner cover LH
- (11) Rear bolt cover inside
- (12) Seat cushion cover
- (13) Occupant detection cushion ASSY
- (14) Rear bolt cover outside
- (15) Hinge inner cover RH
- (16) Seat side cover outside
- (17) Reclining lever

- (18) Inner seat belt ASSY
- (19) Tape
- (20) Seat heater unit

Tightening torque: N·m (kgf-m, ft-lb)

T1: 6 (0.61, 4.43)

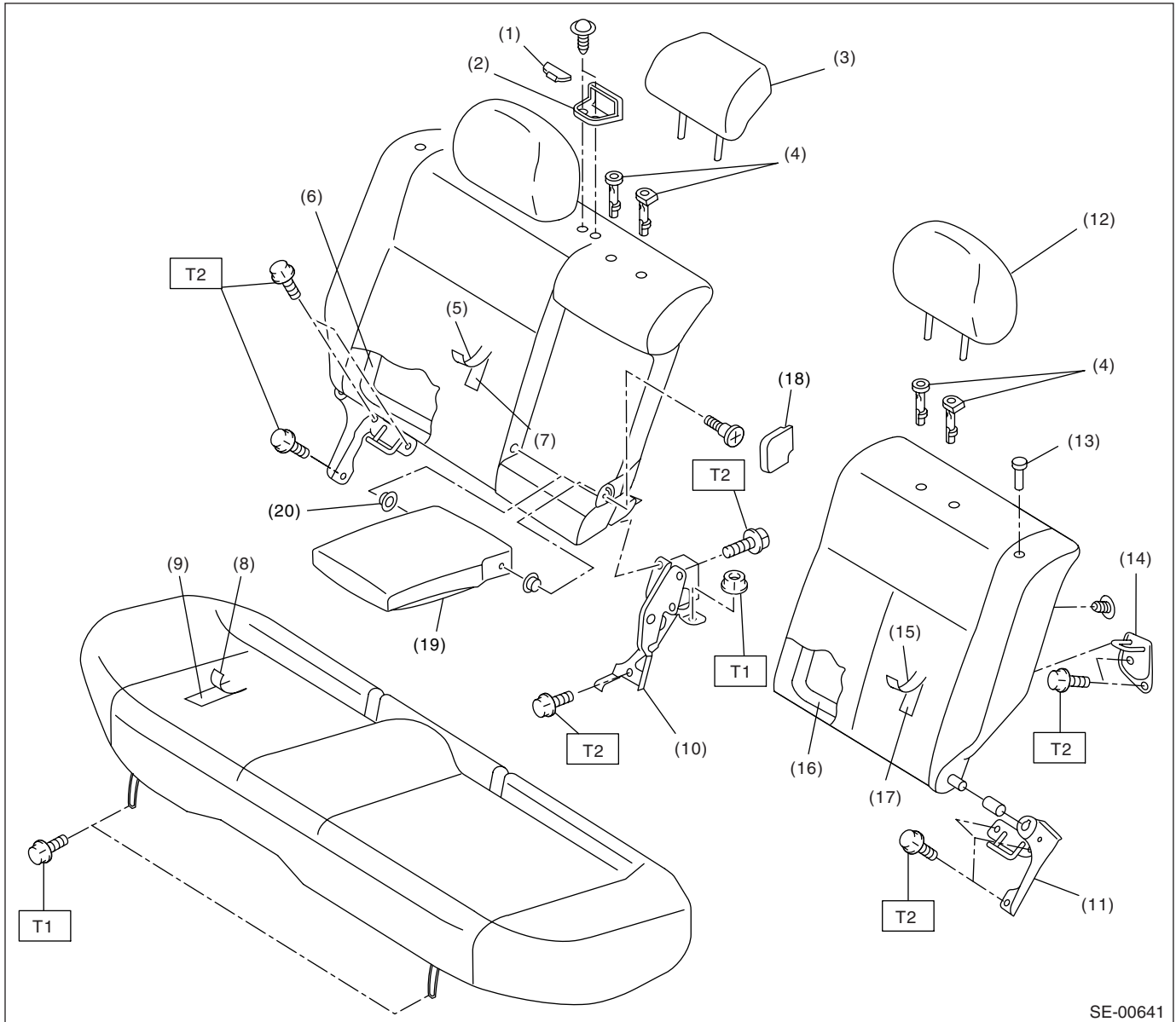
T2: 52 (5.3, 38.4)

T3: 53 (5.4, 39.1)

General Description

SEATS

2. REAR SEAT



SE-00641

- | | | |
|---------------------------|------------------------|-------------------------------|
| (1) Webbing guide cap | (9) Seat cushion pad | (17) Backrest pad LH |
| (2) Webbing guide | (10) Hinge CTR | (18) Armrest cover |
| (3) Center pillow | (11) Hinge LH | (19) Rear center armrest ASSY |
| (4) Headrest free bushing | (12) Headrest | (20) Armrest cover |
| (5) Backrest cover RH | (13) Backrest knob | |
| (6) Backrest frame RH | (14) Striker | |
| (7) Backrest pad RH | (15) Backrest cover LH | |
| (8) Seat cushion cover | (16) Backrest frame LH | |

Tightening torque: N·m (kgf-m, ft-lb)

T1: 24.5 (2.5, 18.1)

T2: 33 (3.4, 24.6)

B: CAUTION**1. DRIVER'S SEAT**

- When removing the front seat from a side airbag loaded vehicle, follow cautions given in the airbag section. <Ref. to AB-3, CAUTION, General Description.>
- Do not remove the seat position sensor from the seat rail.

2. PASSENGER'S SEAT (VEHICLES BEFORE V.I.N. 733000)

- When removing the front seat from a side airbag loaded vehicle, follow cautions given in the airbag section. <Ref. to AB-3, CAUTION, General Description.>
- If the passenger seat is removed from the vehicle or even one attachment bolt is removed from the passenger seat, make sure to perform system adjustment of the occupant detection system after attaching the seat. <Ref. to OD(diag)-13, SYSTEM CALIBRATION, OPERATION, Subaru Select Monitor.>
Failure to do so may cause improper activation of the passenger's airbag.
- On the passenger seat, never disassemble the seat cushion frame assembly and the slide rail, or remove the occupant detection control module or occupant detection sensors, or disconnect the harness connectors. These are all a part of the seat frame assembly.

3. PASSENGER'S SEAT (VEHICLES AFTER V.I.N. 733001)

- When removing the front seat from a side airbag loaded vehicle, follow cautions given in the airbag section. <Ref. to AB-3, CAUTION, General Description.>
- If the seat cushion cover is removed or replaced, make sure to perform occupant detection system adjustment after installing the seat to the vehicle. <Ref. to OD(TYPE B)(diag)-18, SYSTEM CALIBRATION (REZE-ROING), OPERATION, Subaru Select Monitor.>
Failure to do so may cause improper operation of the occupant detection system.
- On the passenger seat, do not remove the occupant detection control module and pressure sensors from the occupant detection cushion assembly. These are attached to the occupant detection cushion assembly.
- Do not replace the seat cushion pad by itself. Always replace the entire occupant detection cushion assembly. Because the cushion pad, occupant detection sensor, occupant detection control module and seat cushion cover are adjusted as a set, if parts from other vehicles or parts from other sets are mixed in, the occupant detection system will not function properly.
- If the seat cushion cover is removed (including when replacing the heater), always replace the wires on the seat cushion cover with new wires.

C: PREPARATION TOOL**1. GENERAL TOOL**

TOOL NAME	REMARKS
Long nose plier	Used for removing the hog ring.
Hog ring pliers	Used for installing the hog ring.
TORX®	Used for removing and installing the slide rail.