

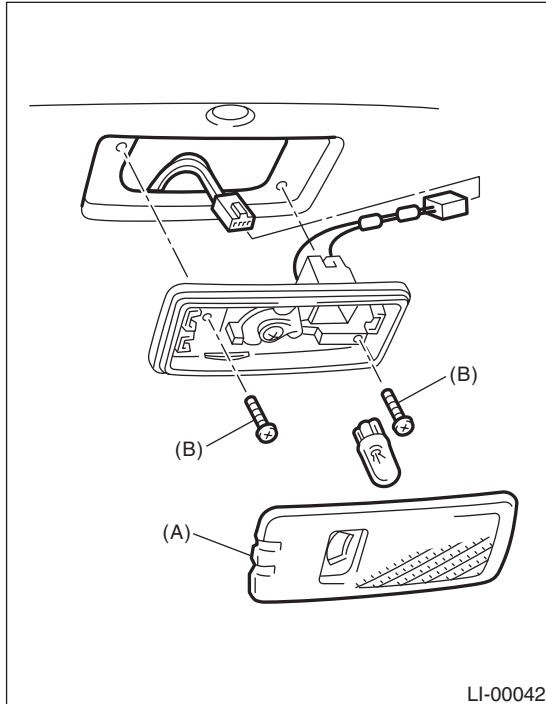
Luggage Room Light

LIGHTING SYSTEM

25. Luggage Room Light

A: REMOVAL

- 1) Disconnect the ground cable from battery.
- 2) Remove the lens (A) and mounting screws (B) of the cargo room light.



- 3) Disconnect the harness connectors and remove the luggage room light.

B: INSTALLATION

Install in the reverse order of removal.

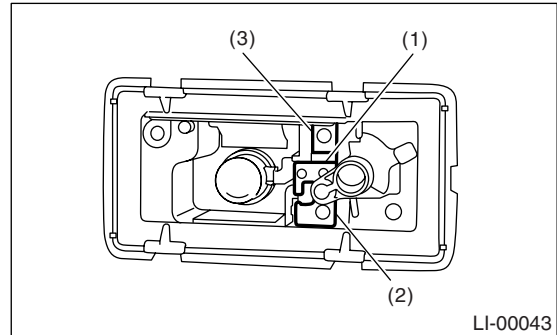
C: INSPECTION

1. LUGGAGE ROOM LIGHT BULB

- 1) Visually check the bulb for blow out.
- 2) Check the bulb specification.
<Ref. to LI-2, SPECIFICATION, General Description.>
- 3) If NG, replace the bulb with a new one.

2. LUGGAGE ROOM LIGHT SWITCH

Measure the luggage room light switch resistance.



Switch position	Terminal No.	Standard
OFF	—	1 MΩ or more
ON	1 and 3	1.5±0.5 Ω
DOOR	1 and 2	1.5±0.5 Ω

WIPER AND WASHER SYSTEMS

WW

	Page
1. General Description	2
2. Wiper and Washer Systems	5
3. Combination Switch (Wiper)	6
4. Wiper Blade	8
5. Washer Tank and Motor	10
6. Front Wiper Arm	11
7. Front Wiper Motor and Link	12
8. Front Washer Nozzle	14
9. Rear Wiper Arm	15
10. Rear Wiper Motor	16
11. Rear Washer	17
12. Wiper Control Relay	18