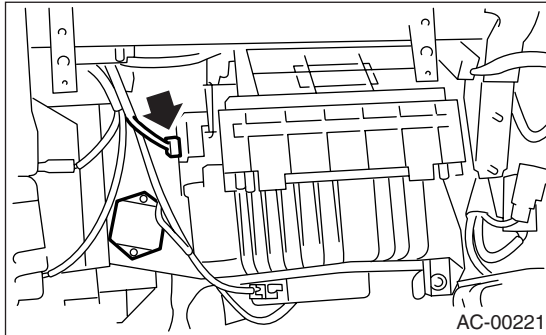


8. Blower Resistor (Manual A/C Model)

A: REMOVAL

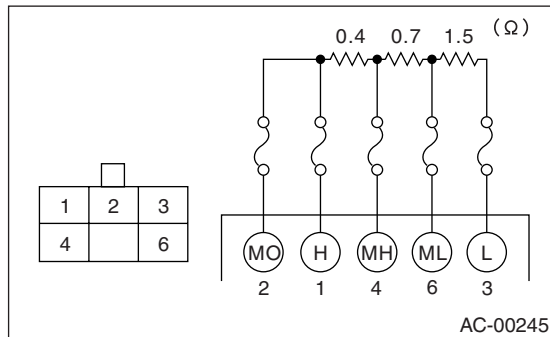
- 1) Remove the glove box. <Ref. to EI-35, REMOVAL, Glove Box.>
- 2) Disconnect the blower resistor connector.
- 3) Loosen the two screws and remove the blower resistor.



B: INSTALLATION

Install in the reverse order of removal.

C: INSPECTION



Measure the blower resistor resistance.

| Terminal No. | Standard |
|--------------|---------------------|
| 2 — 1 | Approximately 0 Ω |
| 2 — 4 | Approximately 0.4 Ω |
| 2 — 6 | Approximately 1.1 Ω |
| 2 — 3 | Approximately 2.6 Ω |

If NG, replace the blower resistor.