

Diagnostic Chart for Self-Diagnosis

HVAC SYSTEM (AUTO A/C) (DIAGNOSTICS)

1. SENSOR CHECK TABLE

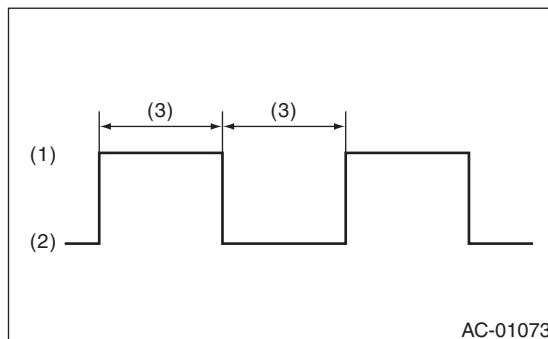
NOTE:

When checking the sunload sensor indoor or in the shade, an open circuit might be indicated. Always check the sunload sensor at a location exposed to direct sunlight.

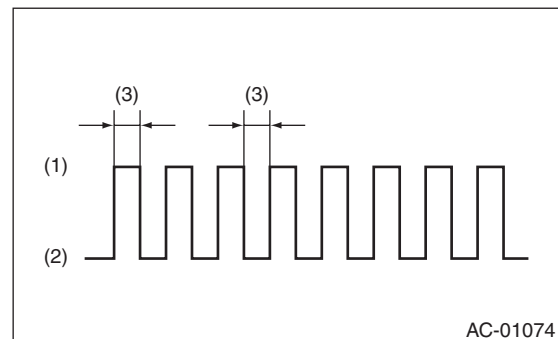
No.	Target for inspection	Air flow control dial position
1	In-vehicle sensor	AUTO
2	Ambient sensor	VENT
3	Evaporator sensor	B/L
4	Sunload sensor *1	HEAT
5	Air mix door actuator PBR	D/H
6	Meter communication	DEF

*1: For a sunload sensor open circuit, only the current malfunction is displayed. (However, it is possible to display past failures for short circuits.)

- The LED blinking pattern for open circuit failures
- The LED blinking pattern for short circuit failures



- (1) Light ON
- (2) Light OFF
- (3) Approx. 1 sec.



- (1) Light ON
- (2) Light OFF
- (3) Approx. 0.2 sec.

2. OPERATING MODE TABLE

Step	1	2	3	4	5	6	7	8
Fan control dial position	AUTO	1st	2nd	3rd	4th	5th	6th	7th
Fan speed (%)	24.0	24.0	34.0	45.0	42.0	59.0	71.0	100.0
Mode door actuator	VENT	VENT	VENT	B/L	HEAT	HEAT	D/H	DEF
Intake door actuator	FRE	REC	REC	FRE	FRE	FRE	FRE	FRE
Air mix door actuator	Maximum cool (0%)	Maximum cool (0%)	Maximum cool (0%)	Mid (50%)	Mid (50%)	Maximum hot (100%)	Maximum hot (100%)	Maximum hot (100%)
Compressor (Magnet clutch)	OFF	ON	ON	ON	ON	ON	ON	ON